



## ISMAIL NATIONAL MAHILA (P.G) COLLEGE

### B. Ed. DEPARTMENT ANNOUNCES

### CERTIFICATE COURSE

### ON

### LOGICAL REASONING, 2022-23

**Total Duration:** 30 hour (Lectures: 20hour; Hand -on practice: 10 hour)

**No. of Sessions:** 30; Time/Session: 1 hour 10:50 to 11:50A.M

**Venue:** B.Ed. Department (Room No:216)

**Seats Available:** 100

**Eligibility:** B.A/B.Sc./B.Com.III Year/M.A /M.Com II Year & B.Ed. students

**Selection Criteria:** Merit list/Interview

**Fee Structure:** Rs.50/- per student

**Application form:** [Click here](#)

#### Important Dates

- Receipt of admission forms: 6<sup>th</sup> -31<sup>st</sup> January, 2023
- Last date of receipt of admission forms:31<sup>st</sup> January, 2023 by 4:00 p.m.
- Notification of Provisional admission list: 31<sup>st</sup> January, 2023
- Admission and Payment of Fees: 1<sup>st</sup> -6<sup>th</sup> February 2023
- Notification of Final admission list: 8<sup>th</sup> February, 2023
- Date of Commencement of course: 9<sup>th</sup> February 2023 (6 lectures per week).
- Dates of Assessment: 25<sup>th</sup> March 2023

**Prof. Anita Rathi**  
Principal

**Prof. Deepti Kaushik**  
IQAC Coordinator

**Dr. Anju Gupta**  
Course Coordinator

## Certificate Course on Logical Reasoning

Logical reasoning consists of aptitude questions that require a logical level of analysis to arrive at the correct solution. Logical Reasoning is very important in whatever job role you are working in. Not just with respect to jobs, but also in real life, you have to think critically and pragmatically to work around problems. In this course, with respect to logical reasoning, we will look at certain arguments and understand what's wrong with the logic in that argument and come up with ways to refute the given arguments. We will also be looking at some blood relation, Clock, Directional problems etc. and not just this, but since math is also very important for critical thinking, we will look at certain questions where we would have to find solutions without using pen and paper. Overall, this course would help you to improve your critical thinking and if you are a fresher, there's a good possibility that these questions might be asked in some of the interviews that you will attend. Finally, there will also be a Q & A session, where all your doubts and queries will be answered.

This Certificate Course consists of twenty theory sessions of 1 hr each, 10 hours of hands-on experience and 2 hours of assessment sessions. This course has been coordinated by Dr. Anju Gupta (B.Ed. Department).

**The Course Language-** The course is taught in the right mixture of English & Hindi to make concepts & tricks easy to understand & make students comfortable to learn all the topics. All PDF notes & questions are in English though.

### Module 1. (Verbal Reasoning)

Unit 1: Analogy  
Unit 2. Direction Sense  
Unit 3. Coding - Decoding  
Unit 4. Series Completion  
Unit 5. Logical Deduction  
Unit6: Puzzle-Seating Arrangement

### Module 2. (Non-Verbal Reasoning)

Unit 1. Classification  
Unit 2. Analogy  
Unit 3. Mirror- Image  
Unit 4. Water- Image

### Hand-on practice

### Course Objectives:

- ❖ To categorize, apply and use thought process to distinguish between concepts of reasoning
- ❖ To prepare and explain the fundamentals related to various possibilities and probabilities related to quantitative aptitude.
- ❖ To critically evaluate numerous possibilities related to puzzles.

### Course Outcome:

On successful completion of the course the students will be able to:

- ❖ Understand the basic concepts of logical reasoning skills
- ❖ Acquire satisfactory competency in use of reasoning.
- ❖ Understand and solve puzzles related questions.
- ❖ Solve placements aptitude papers covering Quantitative Ability and Logical Reasoning Ability.
- ❖ Compete in various competitive exams.

### Note:-

- ❖ **The aggregate minimum of 50% should be scored for certification.**
- ❖ **Certificates will be issued to those students who will maintain 85% of attendance .**

Email Id:-inpgb.ed@gmail.com

Forms are available at [www.inpgcollege.com](http://www.inpgcollege.com)

**Report**  
**30 Hours Certificate Course**  
**on**  
**“LOGICAL REASONING”**  
**Date: from 9th February, to 23rd March, 2023**  
**Organized by**  
**B.Ed. DEPARTMENT, ISMAIL NATIONAL MAHILA**  
**(P.G) COLLEGE**

**Course Objectives:**

- ❖ To categorise, apply and use thought process to distinguish between concepts of reasoning
- ❖ To prepare and explain the fundamentals related to various possibilities and probabilities related to quantitative aptitude.
- ❖ To critically evaluate numerous possibilities related to puzzles.

**Resource persons:-**

Dr. Anju Gupta and Dr. Neeti Chauhan

**No. of Participants attended & Benefitted:-**

100 Students participated and benefited from the certificate course.

**Venue:** Room No 216

**Structure of Certificate Course:**

Certificate Course comprises 20 intensive Lecture and 10 hands-on exercise sessions which included face-to-face delivery For smooth communication one Google classroom was also created to interact with all. Session wise details of the Certificate Course are as follows:

**Day 1, 9th February, 2023      Inaugural session:**

Certificate Course on Logical Reasoning started at 10:45AM. Dr. Anju Gupta, the coordinator of the certificate course delivered the welcome address and started the course with a brief introduction on the objectives and expectations. Dr. Anita Rathi, Principal INM(P.G) college addressed and encouraged the participants and highlighted the importance and salient features of the course.

## Unit 1: Analogy ( Direct/ Simple analogy )

On the very first day as per scheduled time table students learned the most common way of writing out analogies. At the end of the lecture all the issues, doubts and questions related to the lecture were addressed.



The session ended with the vote of thanks delivered by Dr. Anju Gupta.

**Day 2, 10th February, 2023**

**Unit 1: Analogy Analogy ( Completing the Analogous pair)**

In this type of analogy reasoning a pair of words are given in a certain similarity between them. Another word is also given with the same similarities, the students learned to find out the similarities between the first two words and choose the correct word from the given alternatives which carries the same similarities to the question .



**Day 3, 11th February, 2023**

**Unit 1: Analogy (Choosing the Analogous pair)**

In this session of the certificate course, a given set of analogous questions are provided. By examining the given data, the students learned to find out the rule of the analogy and then apply this rule to complete the analogous pair or any given series.



**Day 4, 13th February, 2023**

**Hand on Practice**

Practice paper of exercise on analogy has been given to the students. Various tips and tricks that have been taught to the students to solve questions related to analogy reasoning.



## Day 5, 14th February, 2023

### Unit 2: Direction Sense

On the fifth day of the course students learned the basic concept of direction sense which was an integral part of the Logical Reasoning Section. The right and left directional movement, clockwise and anticlockwise movement, etc, were taught to the students.



## Day 6, 15th February, 2023

### Unit 2: Direction Sense

### Hand on Practice

Practice paper of exercise on direction sense has been given to the students. Various tips and tricks that have been taught to the students to solve questions related to direction sense.



**Day 7, 16th February, 2023**

**Unit 3: Coding - Decoding (Letter Coding)**

In this type, the students learnt to replace the real alphabets in a word by certain other alphabets according to a specific rule to form its code. The students are required to detect the common rule and answer the questions accordingly.



**Day 8, 17th February, 2023**

**Coding - Decoding (Direct Letter coding)**

In this method, one or more English words are given with their respective codes. The coding is based on shifting the positions of the individual letters based on their place in the English Alphabet. Students learned to identify a common pattern and apply the same pattern to the word in the question.





**Day 9, 21th February,2023**

**Coding - Decoding,**

**Hand on Practice**

Practice paper of exercise on coding -decoding has been given to the students. Various tips and tricks that have been taught to the students to solve questions related to coding -decoding.



**Day 10, 22 th February,2023**

**Logical Deduction (Two premise arguments)**

This was the simplest type of problem on logic and the students learnt to arrive at logically valid conclusions. The students were given two statements followed by two conclusions numbered I and II. They have to take the given two statements to be true even if they seem to be at variance from commonly known facts. They read the conclusion and then decided which of the given conclusions logically follows from the two given statements, disregarding commonly known facts.



## Day 11, 23 th February,2023

### Logical Deduction (Three premise arguments)

In this session the students were given three statements followed by three conclusions numbered I, II and III. You learnt to take the given statements to be true even if they seem to be at variance from the commonly known facts. Students read all the conclusions and then decided which of the given conclusions logically follows from the given statements disregarding commonly known facts.



## Day 12, 24th February,2023

### Hand- on Practice

Practice paper of exercise on Syllogism has been given to the students. Various tips and tricks that have been taught to the students to solve questions related to Syllogism.



## Day 13, 25th February, 2023

### Puzzle - Seating Arrangement

On the thirteenth day of the course, some clues regarding seating or placing sequence (linear or circular) of some persons or items were given. The candidates learnt to form the proper sequence using these clues and answer the given questions accordingly.



## Day 14, 27th February, 2023

### Puzzle - Seating Arrangement

In these types of questions students were given a piece of information related to a group of people that includes their seating arrangements such as in a triangle, circle or square manner. The candidates learnt to form the proper sequence using these informations and answer the given questions accordingly.



**Day 15, 28th February, 2023**

### **Hand- on Practice**

Practice paper of exercise on Seating Arrangement has been given to the students. Various tips and tricks that have been taught to the students to solve questions related to Seating Arrangement .



**Day 16, 1st March, 2023**

### **Number Series**

In this session the students were given a series or combination of numbers. These number words followed a certain pattern throughout the series. The candidate learned to study the given series, identify the pattern adopted in the series and either complete the given series with the most appropriate option or find out the wrong word in the series.



## Day 17, 2nd March, 2023

### Alphabet Series Completion

On the seventeenth day of the course, a series of singles, pairs or groups of letters or combinations of letters was given. The terms of the series form a definite pattern with respect to the position of the letters in the English alphabet. Candidates learned to understand this pattern and accordingly found the missing term and wrong term in the given series.



## Day 18, 3rd March, 2023

### Alpha-Numeric Series

Students are given a series of letter and number combinations that follow a set pattern. Students learned to find the missing term from the given alternatives.



## Day 19,4th March,2023

### Hand- on Practice

Practice paper of exercise on Series Completion has been given to the students. Various tips and tricks that have been taught to the students to solve questions related to Series Completion.



## Day 20,11th March,2023

### Classification(Choosing the odd figure)

On this day of the certificate course, students learned to solve the odd one out problems which require critical thinking skills and effective analytical skills. They further learned the selection of odd figures requires identification of each figure in the group and determining a specific trend and pattern so as to exclude it from the group.



**Day 21,13th March,2023**

**Classification(Choosing a similar figure)**

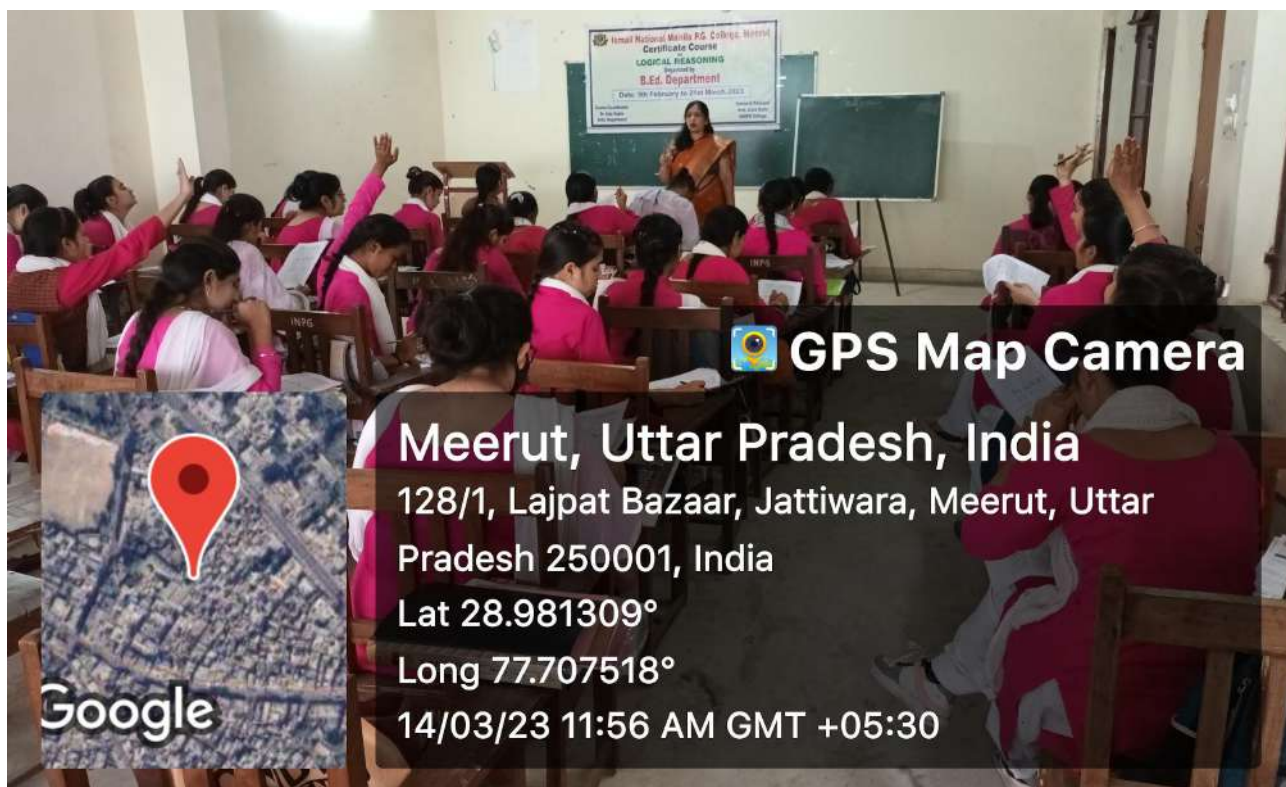
Four un-numbered figures forming the problem set followed by five other figures were given to the students. Students were taught to choose a figure from amongst the numbered figure forming the answer set, such that it is similar to the problem figure in that manner.



**Day 22,14th March,2023**

**Classification(Finding the figure with same characteristic)**

Two un-numbered figures forming the Problem Set followed by five other figures forming the Answer Set were given to the students. The Problem figures had some common characteristics. The candidates learned to select the figure from the Answer Set which also exhibits the same characteristics.



## Day 23,15th March,2023

### Hand- on Practice

Practice paper of exercise on classification has been given to the students. Various tips and tricks that have been taught to the students to solve questions related to classification.



## Day 24,16th March,2023

### Analogy ( Choosing one Element of a similarly related pattern)

On the twenty fourth day of the course students learned to establish a similar relationship between figures by choosing a figure from the Answer set.





## Day 25,17th March,2023

### Analogy( Choosing the Set of similarly related figures)

In this session,students learned non-verbal analogy.A related pair of figures was provided followed by five other pairs of figures. The first pair was unnumbered and depicted a particular relationship between the two figures I and II. The five pairs were numbered as 1, 2, 3, 4 and 5. The students learned to choose one pair out of these five, which most closely resembled the relationship indicated by the figures in the unnumbered pair.



## Day 26,18th March,2023

### Hand- on Practice

Practice paper of exercise on non-verbal analogy has been given to the students.Various tips and tricks that have been taught to the students to solve questions related to non-verbal analogy.



## Day 27,20th March,2023

### Mirror- Image

In this session,students understood the fact that the mirror image not only depends on the characters of the real image but also on the placement of the mirror. They learned three types of questions in non-verbal reasoning on mirror images such as image oriented, number-oriented questions, and alphabet-oriented questions.



## Day 28,21th March,2023

### Hand- on Practice

Practice paper of exercise on mirror image has been given to the students.Various tips and tricks that have been taught to the students to solve questions related to mirror image.



## Day 29, 22nd March, 2023

### Water- Image

Students were given a combination of alphabets and/or numbers followed by four alternatives (a), (b), (c) and (d). They learned to choose the alternative which most closely resembled the water image of the given combination.



## Day 30, 23rd March, 2023

### Hand- on Practice

Practice paper of exercise on water image has been given to the students. Various tips and tricks that have been taught to the students to solve questions related to water image.



## 25th March,2023

### Assessment and Certificate Distribution



### **Conclusion:**

This certificate course focused mainly on strengthening student's conceptual clarity of the fundamentals of logical reasoning. Students were energetic, friendly, calm and composed throughout the session. Through these sessions, students got to know the tricks for solving the questions and to improve their speed while solving. They learnt to see the questions in different angles and finding out solutions through different methods. Faculties were open to their doubts and clarifications. The quality of the materials or questions discussed were unique.

### **Course Outcome:**

The students understood the basic concepts of logical reasoning skills and acquired satisfactory competency in use of reasoning. Students are solving the puzzles related questions easily. They are confident that they can solve placement aptitude papers covering Quantitative Ability and Logical Reasoning Ability and can compete in various competitive exams.

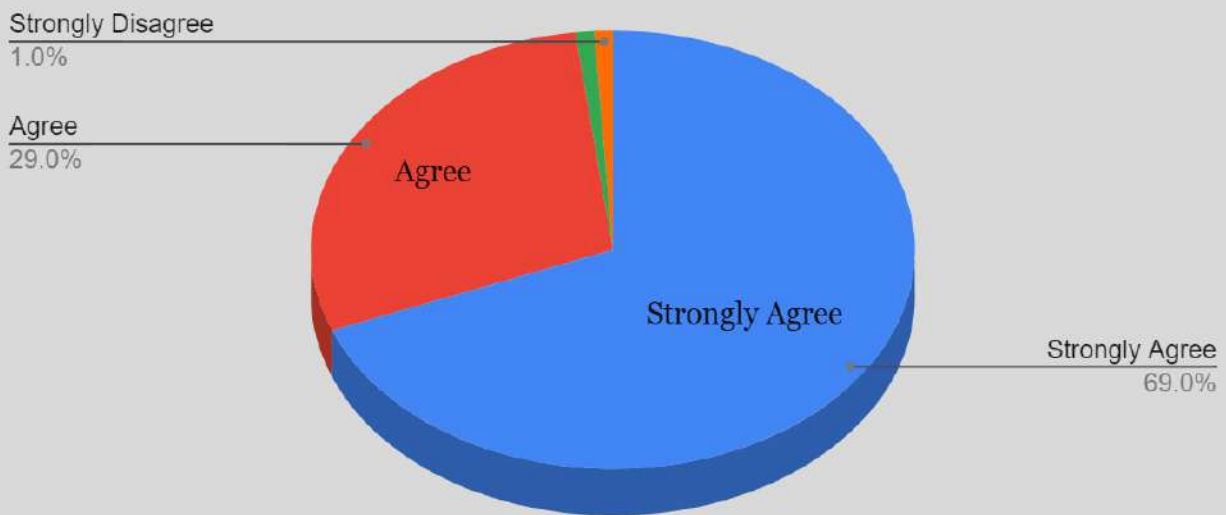
# Participants Feedback

**ISMAIL NATIONAL MAHILA (P.G) COLLEGE**  
**B. Ed. Department**  
**Certificate course**  
on  
**Logical reasoning, 2022-23**  
**Feedback**

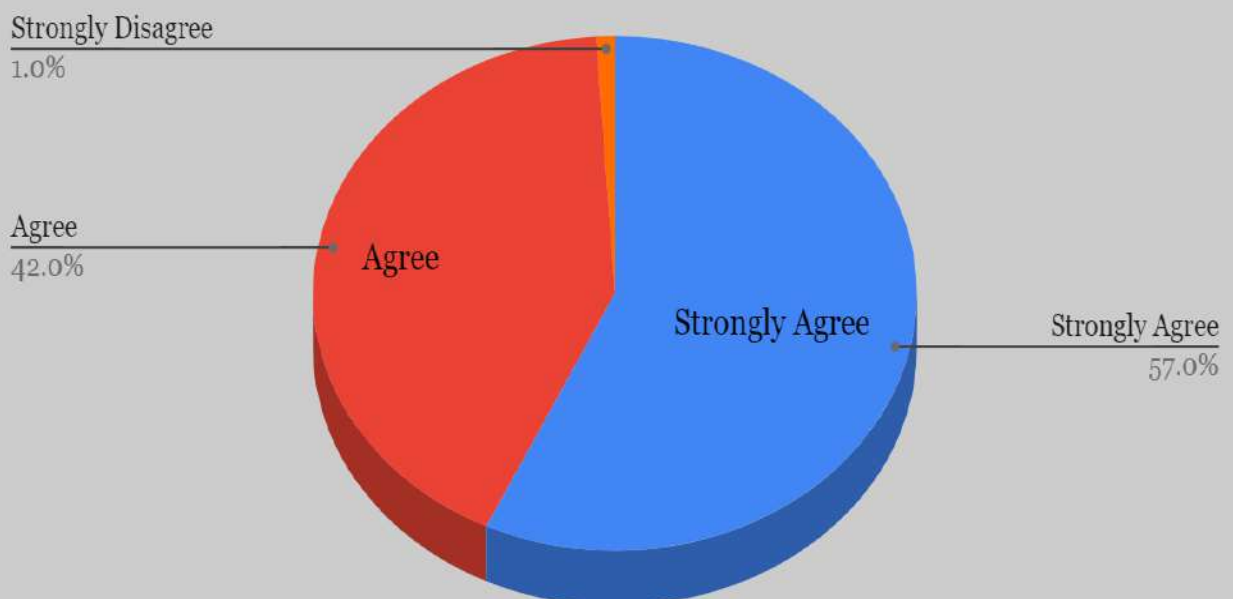
Date: 25/3/2023

S.NO	STATEMENTS	Strongly Agree	Agree	Neutral	Disagree	Strongly Disagree
1	The certificate course was appropriate to the current scenario .	69	29	0	1	1
2	Resource persons were engaging and knowledgeable in content areas.	57	42	0	0	1
3	Syllabus gives adequate weight-age to theoretical and applied knowledge.	59	39	1	0	1
4	The Resource persons had clarified the queries and doubts satisfactorily.	58	39	2	0	1
5	Certificate course was useful and did add to my knowledge.	71	26	1	1	1
6	I would be interested in attending a follow-up, more advanced certificate course on this same subject.	72	27	0	0	1

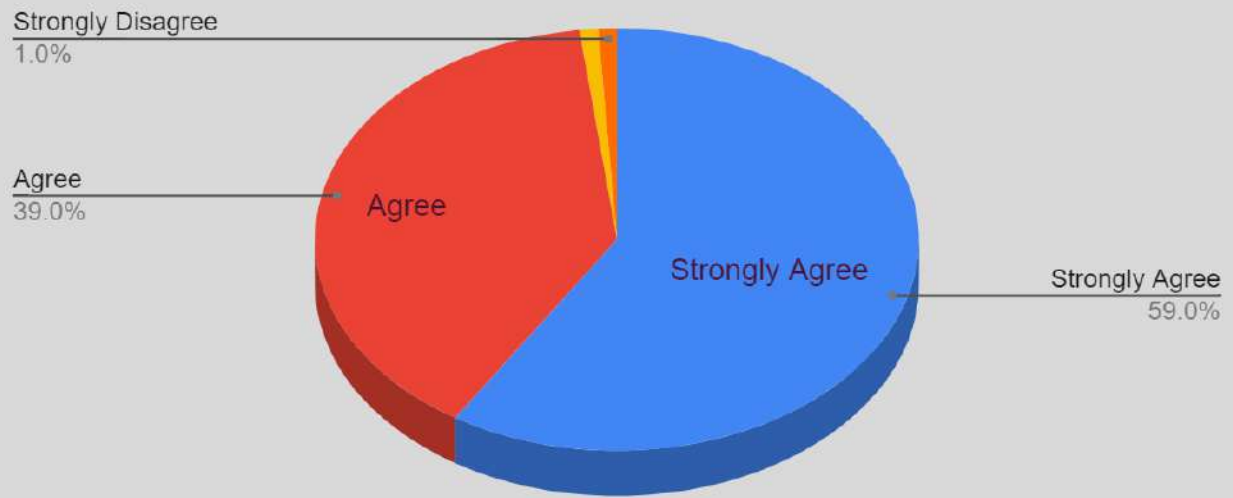
## 1. The certificate course was appropriate to the current scenario



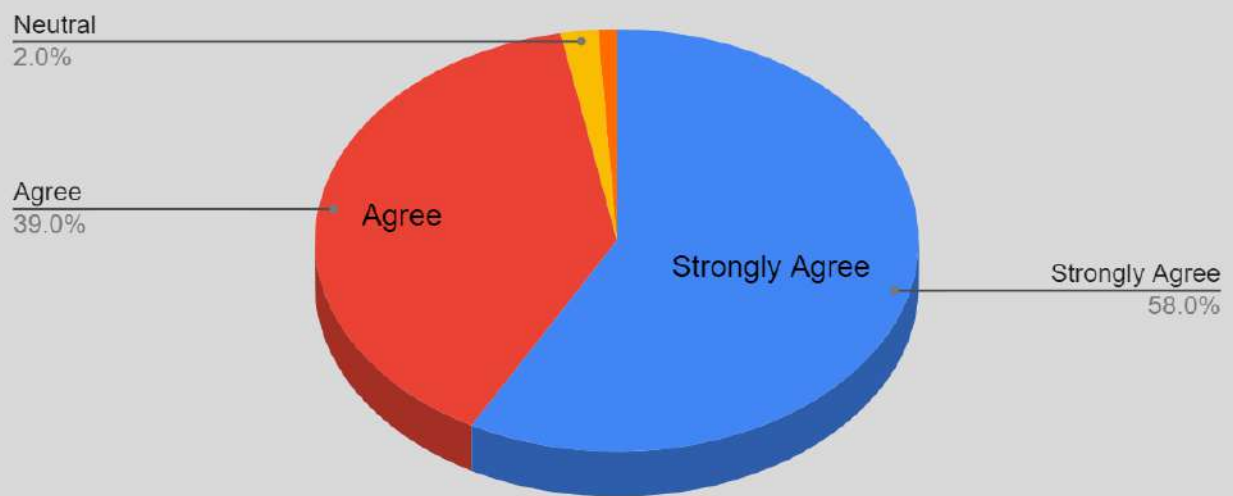
## 2. Resource persons were engaging and knowledgeable in content areas.



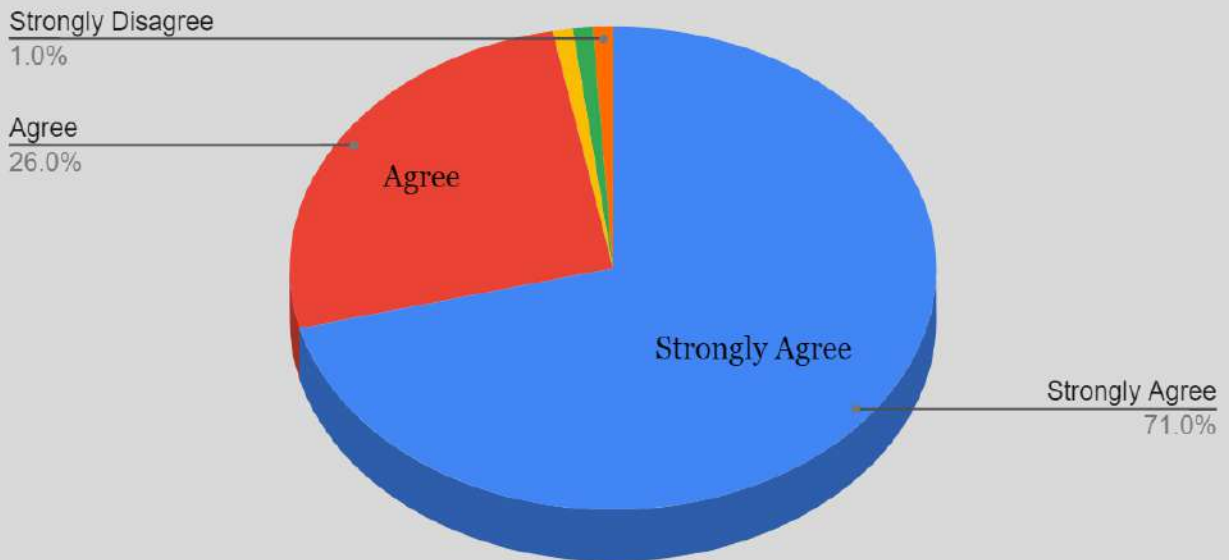
### 3. Syllabus gives adequate weight-age to theoretical and applied knowledge.



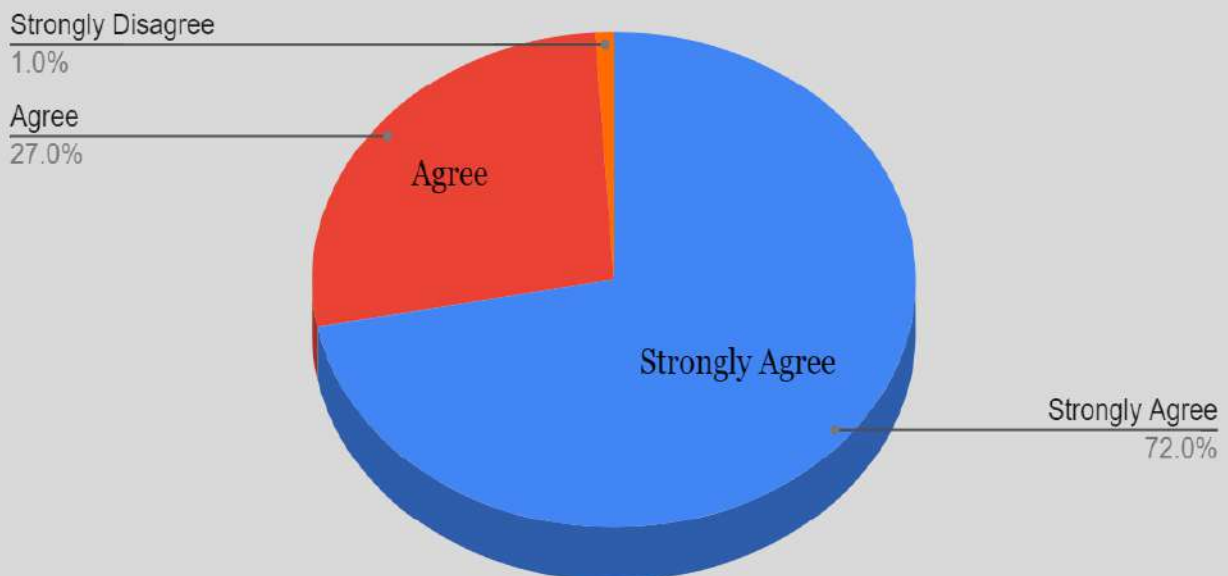
### 4. The Resource persons had clarified the queries and doubts satisfactorily.



5. Certificate course was useful and did add to my knowledge.



6. I would be interested in attending a follow-up, more advanced certificate course on this same subject.







## इस्माईल नेशनल महिला पीजी कालिज, मेरठ

चौ० चरण सिंह विश्वविद्यालय, मेरठ (पूर्व में मेरठ विश्वविद्यालय, मेरठ) से सम्बद्धता प्राप्त

नॉक द्वारा A ग्रेड मूल्यांकित कालिज

### Course title: Logical Reasoning

This course is designed to suit the needs of the outgoing students and to acquaint them with frequently asked patterns in quantitative aptitude and logical reasoning during various examinations and interviews.

**Total Teaching Hours:30**

**Total Marks: 50**

#### Course Objectives

- To categorize, apply and use thought process to distinguish between concepts of reasoning
- To prepare and explain the fundamentals related to various possibilities and probabilities related to quantitative aptitude.
- To critically evaluate numerous possibilities related to puzzles.

#### Course Outcome

On successful completion of the course the students will be able to:

- Understand the basic concepts of logical reasoning skills
- Acquire satisfactory competency in use of reasoning.
- Understand and solve puzzles related questions .
- Solve placements aptitude papers covering Quantitative Ability, Logical and Reasoning Ability.
- Compete in various competitive exams.

#### Course Content:

##### Module 1. (Verbal Reasoning)

Unit 1: Analogy	3 Period
Unit 2. Direction Sense	1 Periods
Unit 3. Coding - Decoding	2 Periods
Unit 4. Series Completion	3 Periods
Unit 5. Logical Deduction	2 Periods
Unit:6. Puzzle -Seating Arrangement etc.	2 Periods

##### Module 2. (Non-Verbal Reasoning)

Unit 1. Classification	3 Periods
Unit 2. Analogy	2 Periods
Unit 3. Mirror- Image	1 Period
Unit 4. Water- Image	1 Period
<b>Hand-on practice</b>	<b>10 Periods</b>

#### Reference books:

1. A Modern Approach To Verbal & Non Verbal Reasoning By R S Agarwal
2. Analytical and Logical reasoning By B S Sijwali
3. Quantitative aptitude for Competitive examination By R S Agarwal

30/11/22  
 Akash  
 SA

स्थापित : 1962



Principal (Office) : 4303100

Fax : 4300443

# ISMAIL NATIONAL MAHILA PG COLLEGE, MEERUT

(Affiliated with C.C.S University, Meerut, formerly Meerut University)

NAAC Accredited A Grade College

## DISTRIBUTION AND WEIGHTAGE OF MARKS FOR CERTIFICATION OF LOGICAL REASONING COURSE

There will be 25 question in the assessment paper of Logical Reasoning Course. The maximum marks for Logical Reasoning Course shall be 50 with the following breakup:

Marks Per Question		02
Total Marks	02x 25	50

### Topic-wise distribution of marks

S.No	Topics	Marks
1	Analogy(Verbal)	04
2	Direction Sense	06
3	Coding - Decoding	04
4	Series Completion	06
5	Logical Deduction	06
6	Puzzle -Seating Arrangement	06
7	Classification	08
8	Analogy(Non-Verbal)	04
9	Mirror- Image	04
10	Water- Image	02

**Note:** The aggregate minimum of 50% should be scored for certification.

**Certificates will be issued to those students who will maintain 85% of attendance .**

## Annexure:2

ISMAIL NATIONAL MAHILA (P.G) COLLEGE		
B. Ed. DEPARTMENT		
CERTIFICATE COURSE		
ON		
LOGICAL REASONING, 2022-23		
		Time :10:50 to 11:50
Time Schedule		
S.No	Day & Date	Topics
1	9/2/2023 Thursday	Analogy ( Direct/ Simple analogy )
2	10/2/2023 Friday	Analogy ( Completing the Analogous pair)
3	11/2/2023 Saturday	Analogy ( Choosing the odd relationship)
4	13/2/2023 Monday	<b>Hand- on Practice</b>
5	14/2/2023 Tuesday	Direction Sense
6	16/2/2023 Thursday	<b>Hand- on Practice</b>
7	17/2/2023 Friday	Coding - Decoding
8	20/2/2023 Monday	Coding - Decoding
9	21/2/2023 Tuesday	<b>Hand- on Practice</b>
10	22/2/2023 Wednesday	Number Series
11	23/2/2023 Thursday	Number Series
12	24/2/2023 Friday	<b>Hand- on Practice</b>
13	25/2/2023 Saturday	Logical Deduction
14	27/2/2023 Monday	Logical Deduction (Two premise aruguments)
15	28/2/2023 Tuesday	Logical Deduction (Three premise aruguments)
16	1/3/2023 Wednesday	<b>Hand- on Practice</b>
17	2/3/2023 Thursday	Classification(Choosing the odd figure)
18	3/3/2023 Friday	Classification(Choosing a similar figure)
19	4/3/2023 Saturday	Classification(Finding the figure with same characteristic)
20	11/3/2023 Saturday	<b>Hand- on Practice</b>
21	13/3/2023 Monday	Puzzle - Seating Arrangement
22	14/3/2023 Tuesday	Puzzle - Seating Arrangement
23	15/3/2023 Wednesday	<b>Hand- on Practice</b>
24	16/3/2023 Thursday	Analogy ( Choosing one Element of a similarly related pattern)
25	17/3/2023 Friday	Analogy( Choosing the Set of similarly related figures)
26	18/3/2023 Saturday	<b>Hand- on Practice</b>
27	20/3/2023 Monday	Mirror- Image
28	21/3/2023 Tuesday	<b>Hand- on Practice</b>
29	22/3/2023 Wednesday	Water- Image
30	23/3/2023 Thursday	<b>Hand- on Practice</b>

**ISMAIL NATIONAL MAHILA (P.G) COLLEGE**  
**B. Ed. Department**  
**Certificate course**  
**On**  
**LOGICAL REASONING,2022-23**  
**ASSESSMENT SHEET**

TIME:1 HOUR

MAXIMUM MARKS: 50

**Note: All questions are compulsory. Each question carries 2 marks .**

1. Vitro is related to Glass in the same way as Ligno is related to.....  
(a) Marble (b) Metal (c) Rock (d) Wood
2. Eyes: Tears::  
(a) Sea Water (b) Volcano: Lava (c) Heart: Artery (d) Hunger Bread
3. In a certain code language, COMPUTRONE is written as PMOCTUENOR. How is ADVANTAGES written in that code?
4. If OUGHT is coded as ABCDE in a certain language. How can TOUGH be coded in the same language?  
a. ABCDE b. BCDEA c. CDEAB d.EABCD
5. A man is facing south. He turns 135° in the anticlockwise direction and then 180° in the clockwise direction. Which direction is he facing now?  
(a)North-east (b) North-west (c) South-east (d) South-west
6. Deepak starts walking straight towards the east. After walking 75 metres he turns to the left and walks 25 metres straight. Again he turns to the left, walks a distance of 40 metres straight, again he turns to the left and walks a distance of 25 metres. How far is he from the starting point?  
(a) 25 metres (b) 50 metres (c) 115 metres (d).140 metres (e) None of these
7. A river flows west to east and on the way turns left and goes in a semi-circle round a hillock, and then turns left at right angles. In which direction is the river finally flowing?  
(a) West (b) East (c) North (d) South
8. Statements: All birds are tall. Some tall are hens.  
Conclusions: I. Some birds are hens. II. Some hens are tall.  
(a) if only conclusion I follows; (b) if only conclusion II follows; (e) if either conclusion I or II follows;  
(d) if neither conclusion I nor II follows; (e) if both conclusions I and II follow.
9. Statements: All tubes are handles. All cups are handles.  
Conclusions: I. All cups are tubes. II. Some handles are not cups.  
(a) if only conclusion I follows; (b) if only conclusion II follows; (e) if either conclusion I or II follows;  
(d) if neither conclusion I nor II follows; (e) if both conclusions I and II follow.
10. Statements: All snakes are trees. Some trees are roads. All roads are mountains.  
Conclusions: I. Some mountains are snakes. II. Some roads are snakes.  
III. Some mountains are trees.  
(a) Only I follows (b) Only II follows (c) Only III follows (d) Both I and II follow (e) None follows
11. A, P, R, X, S and Z are sitting in a row. S and Z are in the centre, and A and P are at the ends. R is sitting on the left of A. Then who is sitting on the right of P?  
(a) A (b) S (c) X (d) Z
- 12.. In a March Past, seven persons are standing in a row. Q is standing left to R but right to P. O is standing right to N and left to P. Similarly, S is standing right to R and left to T. Find out who is standing in the middle.  
(a) P (b) Q (c) R (d) O.

13. In a shop, the items are arranged in a shelf consisting of six rows. Biscuits are kept above the tins of chocolates but below the rows of packets of chips, cakes are at the bottom and the bottles of peppermints are below the chocolates. The topmost row had the display of jam bottles. Where exactly are the bottles of peppermints? Mention the place from the top?

- (1) 2nd      (2) 3rd      (3) 4th      (4) 5th

14. How many terms are there in the series 201, 208, 215,..... 369 ?

- (a) 23      (b) 24      (c) 25      (d) 26

15. Find the next two terms in the series: A, C, F, J, ?, ?

- (a) L, P      (b) M, O      (c) O, U      (d) R, V

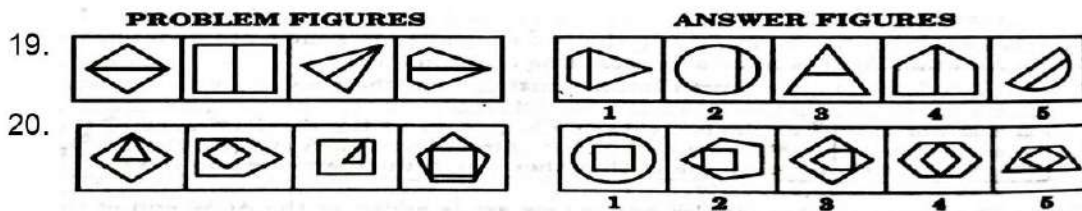
16. D-4, F-6, H-8, J-10, ?, ?

- (a) K-12, M-13      (b) L-12, M-14      (c) L-12, N-14      (d) K-12, M-14

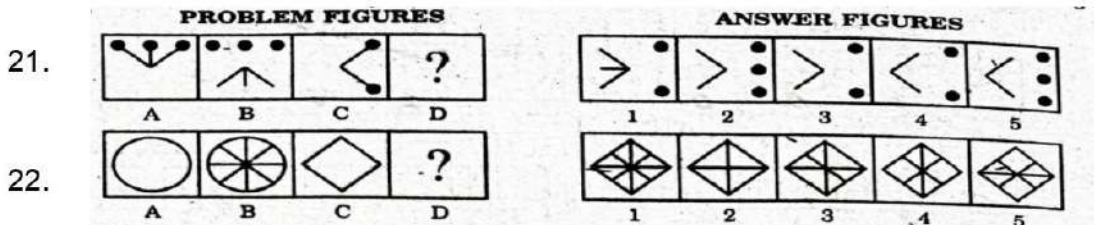
17 to 18. Classification: choosing Odd figure out



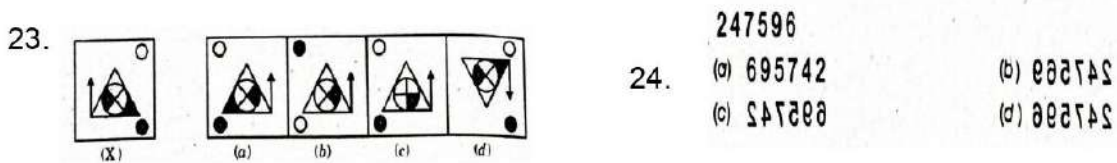
19 to 20. Classification :- Choosing A Similar Figure



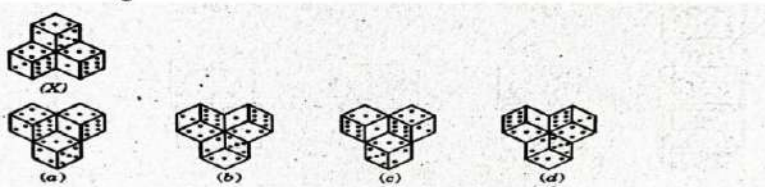
21 to 22. Analogy:- CHOOSING THE SET OF SIMILARLY RELATED FIGURES



23. to 24. Mirror Image



25 Water Image



**ISMAIL NATIONAL MAHILA (P.G) COLLEGE**  
**B. Ed. DEPARTMENT**  
**CERTIFICATE COURSE**  
**ON**  
**LOGICAL REASONING, 2022-23**  
**Assessment Sheet**

S.No	Students' Name	Father's Name	Roll No	class	Marks
1	Aalysa Khatoon	Maksud	37	B.Ed 1st year	42
2	Aasifa Mwati	Kamruddin	29	B.Ed 1st year	48
3	Aayesha	Mr.Saleem	75	B.Ed 1st year	48
4	Afsana	Suleman Khan	27	B.Ed 2 year	46
5	Aiman Kafeel	Kafeel Ahmed	45	B.Ed 1st year	46
6	Aliya Hasan	Mr. Zia Hasan	64	B.Ed 1st year	44
7	Aliya Praveen	Mohammed Irshad	55	B.Ed 1st year	46
8	Amreen	Mr Rahisuddin	47	B.Ed 1st year	46
9	Amrita Singh	Kishan Pal	78	B.Ed 1st year	42
10	Anam Rana	Aaly Ali Khan	72	B.Ed 1st year	42
11	Anisha	Mr Mahipal	5	B.Ed 1st year	48
12	Anjana	Sanjeev Kumar	82	B.Ed 1st year	44
13	Anshika Chaudhary	Mr. Ashok Kumar	36	B.Ed 1st year	48
14	Aqsa Khan	Moh Arif	70	B.Ed 1st year	46
15	Arshi Saifi	Tasleem	32	B.Ed 1st year	48
16	Asba	Dilshad	28	B.Ed 1st year	42
17	Ashbill	Kuljeet Singh	18	B.Ed 1st year	46
18	Asra Javed	Javed	34	B.Ed 1st year	48
19	Avishi	Mr Pramod	74	B.Ed 1st year	44
20	Ayesha	Gulfaraj	27	B.Ed 1st year	44
21	Ayesha	M.Maqsood	13	B.Ed 2 year	48
22	Ayesha Parveen	Mohammed Mustkeen	60	B.Ed 1st year	46
23	Babita	Amar Singh	84	B.Ed 1st year	40
24	Chanchal	Saran Singh	12	B.Ed 1st year	42
25	Divya	Mr. Kanhilal	80	B.Ed 1st year	38
26	Farha Naaz	Sabir Husian	88	B.Ed 1st year	44
27	Fatima Zehra	Anees Ahmed	89	B.Ed 1st year	44
28	Geeta	Mr Ram Prakash	85	B.Ed 1st year	46
29	GulafShah	Mohammed Saleem	19	B.Ed 1st year	44
30	Gulsaba	Kursheed	1	B.Ed 1st year	44
31	Gulshan	Rehmat All	24	B.Ed 1st year	44
32	Hijab Zehra	Ashraf Hussain Zaidi	23	B.Ed 1st year	46
33	Himanshi	Mr Vishnu Sharma	21	B.Ed 1st year	48
34	Himanshi	Mr Kiran Pal	48	B.Ed 1st year	50
35	Iqra	Mohammed Irshad	15	B.A 3 Year	48
36	Kajal	Kailash Chand	79	B.Ed 1st year	46
37	Kajal Khan	Bhoore Khan	39	B.Ed 1st year	50
38	Kanchan	Raghuveer Singh	94	B.Ed 1st year	44
39	Kanishka Chaurasia	Arvind Chaurasia	41	B.Ed 1st year	48
40	Km Deepa	Mr Subhash Chandra	49	B.Ed 1st year	42
41	Komal	Bishan Singh	91	B.Ed 1st year	46
42	Komal	Prem Singh	30	B.Ed 1st year	50
43	Mahak	Ashish Vishnoi	8	B.Ed 1st year	44
44	Mahjabeen	Rafeeq	9	B.Ed 1st year	42
45	Manisha	Sher Singh Rana	92	B.Ed 1st year	48
46	Masha Praveen	Yusuf Saifi	51	B.Ed 1st year	46

47	Meenakshi	Ram Singh	86	B.Ed 1st year	40
48	Monika Kaushik	Sanjay Kaushik	58	B.Ed 1st year	44
49	Muskaan	Ashish Vishnoi	13	B.Ed 1st year	44
50	Neha	Suleman Khan	50	B.A3 year	48
51	Neha Sharma	Mr R. K Sharma	90	B.Ed 1st year	42
52	Nida	M.Aleem	51	B.Ed 2 year	44
53	Nisha	Mr. Prem Singh	26	B.Ed 1st year	46
54	Pooja	Mr Baburam	31	B.Ed 1st year	48
55	Pooja	Shyam Sundar	76	B.Ed 1st year	48
56	Pooja	Mr Yogendra	17	B.Ed 1st year	48
57	Pooja	Mangal Singh	100	B.Ed 1st year	44
58	Poonam	Kalu Singh	69	B.Ed 1st year	46
59	Poonam	Mr.Sukantpal	16	B.Ed 1st year	44
60	Poonam Devi	Ram Krishan	43	B.Ed 1st year	42
61	Poornima Arora	Anil Kumar	14	B.Ed 1st year	50
62	Pratibha Kapoor	Manoj Kapoor	38	B.Ed 1st year	38
63	Preeti Singh	Mr. Vijay Pal Singh	4	B.Ed 1st year	48
64	Rahat	Yunus Ali	6	B.Ed 1st year	42
65	Rajni	Takchand	10	B.Ed 1st year	40
66	Ramsha	Abdul Gaffar	11	B.Ed 1st year	48
67	Raveena	Mr Ilyas	25	B.Ed 1st year	48
68	Razia	Rahisuddin	65	B.Ed 1st year	44
69	Rehnuma Ansari	Issar Ansari	2	B.Ed 2 year	44
70	Reshma Saifi	Mohammed Kayyom Saifi	73	B.Ed 1st year	48
71	Riya Rastogi	Vikas Rastogi	42	B.Ed 1st year	48
72	Ruchi Gautam	Mr. Gilab Singh	44	B.Ed 1st year	44
73	Rumesha Khan	Mohammed kasif Khan	63	B.Ed 1st year	48
74	Sadiya Salamat	late Salamat	67	B.Ed 1st year	46
75	Sangeeta	Harish Kumar	97	B.Ed 1st year	46
76	Sania Zehra	Haider Ali	46	B.Ed1 year	50
77	Sapna	Munna Lal	99	B.Ed 1st year	44
78	Sayma Parveen	Siraj Ahmed	26	B.Ed 2 year	48
79	Seema	Mahesh Chand	22	B.Ed 1st year	44
80	seema	Shyam Sundar	77	B.Ed 1st year	44
81	Shabana	Dr. Nizamul Hasan	87	B.Ed 1st year	46
82	Shabnam	Kalva Khan	3	B.Ed 1st year	48
83	Shakira	Tahir	66	B.Ed 1st year	42
84	Shariba	Mohammed Yusuf	23	B.A2 Year	44
85	Sheeba Salim	Mr Saleem	53	B.Ed 1st year	44
86	Sheereen Ansari	Mohammed Shahid	20	B.Ed 1st year	48
87	Sheetal	Mr Surendra pal Singh	40	B.Ed 1st year	46
88	Sheetal Rani	Mr. Subhash Chand	83	B.Ed 1st year	44
89	Shilpi	Sunil Kumar	33	B.Ed 1st year	50
90	Shubhra Vidhya	Narendra Kumar	2	B.Ed 1st year	46
91	Sumaiya	Mohd. Yunus	57	B.Ed 1st year	44
92	Summya.	Iqal	54	B.Ed 1st year	48
93	Swati Singh	Mr. R.P.Singh	52	B.Ed 1st year	46
94	Tayyaba	Mohammed Yusuf	59	B.Ed 1st year	48
95	Tuba	Mohammed Ghayas	50	B.Ed 1st year	44
96	Tuba Khan	Kashif Khan	68	B.Ed 1st year	44
97	Varnika Aggarwal	Dinesh Agarwal	56	B.Ed 1st year	40
98	Vibhuti	Radheyshyam	61	B.Ed 1st year	48
99	Yashvee Rana	Hukum Singh	81	B.Ed 1st year	42
100	Zainab	Mohammed Naseem	62	B.Ed 1st year	44

**Annexure:5**

स्थापित : 1962

Principal (Office) : 4303100

Fax : 4300443



**ISMAIL NATIONAL MAHILA PG COLLEGE, MEERUT**

**(Affiliated with C.C.S University, Meerut, formerly Meerut University)**

**NAAC Accredited A Grade College**


Date: 8.02.2023

**NOTICE**

The students are hereby informed to attend the classes for Certificate Course on "Logical Reasoning which will be conducted from 09-02-2023 as per the schedule. You are informed to make use of the opportunity to acquire the Knowledge.

  
**Dr. Anju Gupta**

Course co-ordinator.

  
**Prof. Anita Rathi**  
Principal





INPG Online Classes G...

only admins can send messages



24 December 2022



**ISMAIL NATIONAL MAHILA (P.G) COLLEGE**

**B. Ed. DEPARTMENT ANNOUNCES**



DOC-20221223-WA0004.

3 pages • 218 kB • PDF

12:12 ✓

All the faculty members are hereby informed that the certificate course on "Logical Reasoning" is being conducted by the B.Ed. department in the month of February. It is a humble request to all of you to circulate the brochure of certificate course on Logical Reasoning on your B.A, B.Com, M.Com and M.A Final year student's WhatsApps groups, so that students can fill the application form of certificate course on time.

12:12 ✓





# Certificate Course...



Anju Gupta

8 Feb



Time:10.50 AM to 11:50 AM

1 class comment



Share with your class...



Anju Gupta

23 Mar



Solve the practice Exercises

Add class comment



Anju Gupta

8 Feb



NOTICE

The students are hereby informed to attend the classes for Certificate Course on "Logical Reasoning which will be conducted from 09-0...

2 class comments



New material: Practice Exercises on water Image

23 Mar



Add class comment



New material: Time schedule

6 Feb



Add class comment



Anju Gupta

22 Mar



Solve water image exercise



New material: Final list of the Students

6 Feb



Add class comment

Add class comment

Stream

Classwork

People

Stream

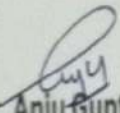
Classwork


People



ISMAIL NATIONAL MAHILA (P.G) COLLEGE ,MEERUT  
B.Ed. DEPARTMENT  
CERTIFICATE

This is to certify that Ms/Mrs. ....Raziya..... has participated and successfully completed certificate course on "LOGICAL REASONING" from 09th February, 2023 to 23rd March, 2023 organized by B.Ed. Department, INMPG College, Meerut.

  
Dr. Anju Gupta  
Course Coordinator  
B.Ed. Department

  
Prof. Anita Rathi  
Principal  
INMPG College



## इस्माईल नेशनल महिला पीजी कालिज, मेरठ

चौ० चरण सिंह विश्वविद्यालय, मेरठ (पूर्व में मेरठ विश्वविद्यालय, मेरठ) से सम्बद्धता प्राप्त

नॉक द्वारा A ग्रेड मूल्यांकित कालिज

दिनांक 25.03.2023

### प्रेस विज्ञप्ति

इस्माईल नेशनल महिला पी० जी० कॉलेज में आज दिनांक 25 मार्च, 2023 दिन शनिवार को बी०एड० डिपार्टमेंट में "लॉजिकल रीजनिंग" प्रकरण पर 30 घंटे के सर्टिफिकेट कोर्स का समापन हुआ। कॉलेज की प्राचार्या प्रोफेसर अनीता राठी ने सर्टिफिकेट कोर्स का समापन करते हुए कहा कि विश्लेषणात्मक और तार्किक तर्क कौशल का परीक्षण करने के लिए सरकारी और निजी क्षेत्र अपनी भर्ती प्रक्रिया के एक भाग के रूप में लाजिकल रिजनिंग टेस्ट आयोजित करते हैं। इसलिए इस सर्टिफिकेट कोर्स का उद्देश्य छात्राओं को प्रतियोगी परीक्षाओं के लिए तैयार करना और उन्हें लाजिकल रिजनिंग, पेपर पैटर्न और प्रश्नों के कठिनाई स्तर के बारे में जानकारी देना था। कॉलेज की आइक्यूएसी कोऑर्डिनेटर प्रोफेसर दीप्ति कौशिक ने लॉजिकल रीजनिंग कोर्स को पूरा करने पर छात्राओं को बधाई दी। सर्टिफिकेट कोर्स की कोऑर्डिनेटर एवं रिसोर्स पर्सन्स डॉ. अंजू गुप्ता ने बताया कि सर्टिफिकेट कोर्स में 100 छात्राएं रजिस्ट्रेशन कराकर लाभान्वित हुईं। लॉजिकल रीजनिंग कोर्स में छात्राओं ने एनालॉगी, क्लासिफिकेशन, डायरेक्शन, सीटिंग अरेंजमेंट, सिलोगिसम, नंबर सीरीज, अल्फाबेटिकल सीरीज, कोडिंग- डिकोडिंग, मिरर इमेज, वाटर इमेज आदि तर्क कौशल की बेसिक जानकारी एवं सूक्ष्म बारीकियां सीखीं। सर्टिफिकेट कोर्स की रिसोर्स पर्सन डॉ. नीति चौहान ने कहा कि इस कोर्स ने छात्राओं को महत्वपूर्ण सोच, मौखिक तर्क और गैर मौखिक तर्क से परिचित कराया है। इसका उद्देश्य उन्हें विश्लेषणात्मक तर्क के बुनियादी कौशल प्रदान करना है, जो उन्हें विभिन्न प्रकार के करियर में एक विशिष्ट बढ़त देगा।

सम्पादक / सम्पादिका

कृपया उक्त प्रैस विज्ञप्ति छापने की कृपा करें।

प्रो० दीपा त्यागी

प्रेस प्रवक्ता



## मेरठ:— इस्माईल पीजी कॉलेज के बीएड विभाग में "लॉजिकल रीजनिंग" प्रकरण पर 30 घंटे का सर्टिफिकेट कोर्स का शुभारंभ



वाक आदि। कार्यक्रम में मीडियम व सीनियर छात्र छात्राओं की विभिन्न रैसों का भी आयोजन हुआ। जैसे 100 मीटर रिप्ट, 200 मीटर रेस, 50 गुणा चार रिले रेस, 25 गुणा चार रिले रेस और स्मॉकिल रेस इत्यादि। रेस में प्रथम, द्वितीय व तृतीय स्थान पर आने वाले बच्चों को स्वर्ण, रजत व कांस्य पदकों से अलंकृत किया गया। खेलों के प्रतिभागियों के उत्साहवर्धन हेतु उपहार भी दिए गए। पदक विजेताओं के नाम इस प्रकार हैं। फिजिकल फिटनेस को नजरअंदाज न करते हुए, पी टी डिप्ले का शानदार प्रदर्शन किया गया। कक्षा 5 से कक्षा 8 तक के छात्रों ने भाग्यशाली प्रदर्शन किया। साइड खेल पर योग ध्यान को मर्मस्पर्शी प्रस्तुति दी।

### बी0एड0 डिपार्टमेंट के द्वारा लॉजिकल रीजनिंग प्रकरण पर 30 घण्टे का सर्टिफिकेट कोर्स का आरंभ

आज का बुलेटिन अतुल माहेधरी इस्माईल नेशनल महिला पी0 कॉलेज में आज दिनांक 9 फरवरी, 2023 दिन बुधवार को बी0एड0 डिपार्टमेंट के द्वारा लॉजिकल रीजनिंग प्रकरण पर 30 घण्टे का सर्टिफिकेट कोर्स का आरंभ हुआ। कॉलेज की प्राचार्या प्रोफेसर अनीता राठी ने सर्टिफिकेट कोर्स का शुभारंभ करते हुए इसकी उपयोगिता पर प्रकाश डालते हुए कहा कि लॉजिकल रीजनिंग कोर्स एक ऐसा कोर्स है, जो लगभग सभी प्रमुख परीक्षाओं में शामिल होता है। यह कोर्स आपको अपने तर्क कौशल,



मौखिक क्षमता का निर्माण करने और अपने डेटा च्याख्या कौशल को विकसित करने में मदद करेगा। कोर्स कोऑर्डिनेटर डॉ अंजु गुप्ता ने छात्राओं का सर्टिफिकेट कोर्स में स्वागत किया और बताया कि बी एड विभाग द्वारा

विद्या की बाधाओं को दूर करने और छात्राओं के करियर के लक्ष्यों को आगे बढ़ाने के लिए आवश्यक कौशल बनाने में उनकी मदद करने के लिए लॉजिकल रीजनिंग कोर्स शुरू किया गया है। सर्टिफिकेट कोर्स को दो सेक्शन में बांटा गया है जिसमें छात्राओं को चर्चल एंड नॉनचर्चल लॉजिकल रीजनिंग का अभ्यास कराया जाएगा। इस कोर्स की अवधि 30 कार्य दिवस होंगे। सर्टिफिकेट कोर्स के प्रथम दिन स्टूडेंट्स को डायरेक्ट एवं सिंपल एनालॉजी सिखाया गया। छात्राओं ने उत्साह पूर्वक सहभागिता की।

**मेरठ शुक्रवार  
10 फरवरी 2023**

## दिवस या



उत्साहवर्धन में कॉलेज के सुधाशु सिंहल, न व निदेशक : साथ समस्त रहे।

### बी0एड0 डिपार्टमेंट में लॉजिकल रीजनिंग प्रकरण पर 30 घंटे के सर्टिफिकेट कोर्स का समापन हुआ

आज का बुलेटिन अतुल माहेधरी मेरठ। इस्माईल नेशनल महिला पी0 कॉलेज में बी0एड0 डिपार्टमेंट में लॉजिकल रीजनिंग प्रकरण पर 30 घंटे के सर्टिफिकेट कोर्स का समापन हुआ। कॉलेज की प्राचार्या प्रोफेसर अनीता राठी ने सर्टिफिकेट कोर्स का समापन करते हुए कहा कि विश्लेषणात्मक और तार्किक तर्क कौशल का परीक्षण करने के लिए सरकारी और निजी क्षेत्र अपनी भर्ती प्रक्रिया के एक भाग के रूप में लॉजिकल रीजनिंग टेस्ट आयोजित करते हैं। इसलिए इस सर्टिफिकेट कोर्स का उद्देश्य छात्राओं को प्रतियोगी परीक्षाओं के लिए तैयार करना और उन्हें लॉजिकल रीजनिंग, पेपर पैटर्न और प्रश्नों के कठिनाई स्तर



कराकर लाभान्वित हुईं। लॉजिकल रीजनिंग कोर्स में छात्राओं ने एनालॉजी, क्लासिफिकेशन, डायरेक्शन, सीटिंग अरेंजमेंट, सिलोगरिजम, नंबर सीरीज, अल्फाबेटिकल सीरीज, कोडिंग- डिकोडिंग, मिरर इमेज, चाटर इमेज आदि तर्क कौशल की बेसिक जानकारी एवं सुक्ष्म चारीकियां सीखी। सर्टिफिकेट कोर्स की रिसोर्स पर्सन डॉ. नीति चौहान ने उन्हें महत्वपूर्ण सोच, मौखिक तर्क और गैर मौखिक तर्क से परिचित कराया। इसका उद्देश्य उन्हें विश्लेषणात्मक तर्क के बुनियादी कौशल प्रदान करना है, जो उन्हें विभिन्न प्रकार के करियर में एक विशिष्ट बहदत देगा।

के बारे में जानकारी देना था। कॉलेज की आइव्यूएसी कोऑर्डिनेटर प्रोफेसर दीप्ति कौशिक ने लॉजिकल रीजनिंग कोर्स को पूरा करने पर छात्राओं को बधाई दी। सर्टिफिकेट कोर्स की कोऑर्डिनेटर एवं रिसोर्स पर्सन्स डॉ. अंजु गुप्ता ने बताया कि सर्टिफिकेट कोर्स में 100 छात्राएं रजिस्ट्रेशन

**मेरठ रविवार  
26 मार्च, 2023**



9/2/23. 10/2/23. 11/2/23. 13/2/23. 14/2/23. 15/2/23.

34	Nisha	B.Ed 1st year	Nisha	Nisha	Nisha	Nisha	Nisha	Nisha
35	Shabnam	B.Ed 1st year	Shabnam	Shabnam	Shabnam	Shabnam	Shabnam	Shabnam
36	Rehnuma Ansari	B.Ed 2 year	Rehnuma Ansari	Rehnuma Ansari	Rehnuma Ansari	Rehnuma Ansari	Rehnuma Ansari	Rehnuma Ansari
37	Preeti Singh	B.Ed 1st year	Preeti Singh	Preeti Singh	Preeti Singh	Preeti Singh	Preeti Singh	Preeti Singh
38	Masha Praveen	B.Ed 1st year	Masha Praveen	Masha Praveen	Masha Praveen	Masha Praveen	Masha Praveen	Masha Praveen
39	Tuba	B.Ed 1st year	Tuba	Tuba	Tuba	Tuba	Tuba	Tuba
40	Arshi Saifi	B.Ed 1st year	Arshi Saifi	Arshi Saifi	Arshi Saifi	Arshi Saifi	Arshi Saifi	Arshi Saifi
41	Sheetal Rani	B.Ed 1st year	Sheetal Rani	Sheetal Rani	Sheetal Rani	Sheetal Rani	Sheetal Rani	AB
42	Kamal	B.Ed 1st year	Kamal	Kamal	Kamal	Kamal	Kamal	Kamal
43	Swati Singh	B.Ed 1st year	Swati Singh	Swati Singh	Swati Singh	Swati Singh	Swati Singh	Swati Singh
44	Riya Rastogi	B.Ed 1st year	Riya Rastogi	Riya Rastogi	Riya Rastogi	Riya Rastogi	Riya Rastogi	Riya Rastogi
45	Ayesha	B.Ed 2 year	Ayesha	Ayesha	Ayesha	Ayesha	Ayesha	Ayesha
46	Nida	B.Ed 2 year	Nida	Nida	Nida	Nida	Nida	Nida
47	Anshika Chaudhary	B.Ed 1st year	Anshika Chaudhary	Anshika Chaudhary	Anshika Chaudhary	Anshika Chaudhary	Anshika Chaudhary	Anshika Chaudhary
48	Shilpi	B.Ed 1st year	Shilpi	Shilpi	Shilpi	Shilpi	Shilpi	Shilpi
49	Aayesha	B.Ed 1st year	Aayesha	AB	Aayesha	AB	Aayesha	AB
50	Meenakshi	B.Ed 1st year	Meenakshi	AB	Meenakshi	Meenakshi	Meenakshi	Meenakshi
51	Monika Kaushik	B.Ed 1st year	Monika Kaushik	Monika Kaushik	Monika Kaushik	AB	AB	AB
52	Ruchi Gautam	B.Ed 1st year	Ruchi Gautam	Ruchi Gautam	Ruchi Gautam	Ruchi Gautam	Ruchi Gautam	Ruchi Gautam
53	Tuba Khan	B.Ed 1st year	Tuba Khan	Tuba Khan	Tuba Khan	Tuba Khan	Tuba Khan	Tuba Khan
54	Rajni	B.Ed 1st year	Rajni	Rajni	Rajni	Rajni	Rajni	Rajni
55	Rajia	B.Ed 1st year	Rajia	Rajia	Rajia	Rajia	Rajia	Rajia
56	Asra Javed	B.Ed 1st year	Asra Javed	Asra Javed	Asra Javed	Asra Javed	Asra Javed	Asra Javed
57	Aliya Hasan	B.Ed 1st year	Aliya Hasan	Aliya Hasan	Aliya Hasan	Aliya Hasan	Aliya Hasan	Aliya Hasan
58	Aiman Kafeel	B.Ed 1st year	Aiman Kafeel	Aiman Kafeel	Aiman Kafeel	Aiman Kafeel	Aiman Kafeel	Aiman Kafeel
59	Seema	B.Ed 1st year	Seema	Seema	Seema	Seema	Seema	Seema
60	Poonam 69	B.Ed 1st year	Poonam	Poonam	Poonam	Poonam	Poonam	Poonam
61	Kajal Khan	B.Ed 1st year	Kajal Khan	Kajal Khan	Kajal Khan	Kajal Khan	Kajal Khan	Kajal Khan
62	Manisha	B.Ed 1st year	Manisha	Manisha	Manisha	Manisha	Manisha	Manisha
63	Vibhooti	B.Ed 1st year	Vibhooti	Vibhooti	Vibhooti	Vibhooti	Vibhooti	Vibhooti
64	Neha	B.A 3rd year	Neha	Neha	Neha	Neha	Neha	Neha
65	Rahat	B.Ed 1st year	Rahat	AB	Rahat	Rahat	Rahat	Rahat
66	Himanshi	B.Ed 1st year	Himanshi	Himanshi	Himanshi	AB	AB	AB

			9/2/23	10/2/23	11/2/23	13/2/23	14/2/23	15/2/23
67	Poornima Arora	B.Ed 1st year	Purnima	Purnima	Purnima	Purnima	Purnima	Purnima
68	Poonam 16	B.Ed 1st year	AB	POONAM	POONAM	POONAM	POONAM	POONAM
69	Shubhra Vidhya	B.Ed 1st year	Shubhra	Shubhra	Shubhra	Shubhra	Shubhra	Shubhra
70	Gulsaba	B.Ed 1st year	Gulsaba	Gulsaba	Gulsaba	Gulsaba	Gulsaba	Gulsaba
71	Mahjabeen	B.Ed 1st year	Mehjabeen	Mehjabeen	Mehjabeen	AB	Mehjabeen	Mehjabeen
72	Divya	B.Ed 1st year	Divya	Divya	Divya	Divya	Divya	Divya
73	Aqsa Khan	B.Ed 1st year	AB	Aqsakhan	Aqsakhan	AB	Aqsakhan	Aqsakhan
74	Babita	B.Ed 1st year	Babita	Babita	Babita	Babita	Babita	Babita
75	Chanchal	B.Ed 1st year	Chanchal	Chanchal	AB	AB	Chanchal	Chanchal
76	Pooja 16	B.Ed 1st year	AB	Pooja	Pooja	Pooja	Pooja	Pooja
77	Komal	B.Ed 1st year	Komal	Komal	Komal	Komal	Komal	Komal
78	Mahak	B.Ed 1st year	Mehak	Mehak	Mehak	Mehak	Mehak	Mehak
79	Muskaan	B.Ed 1st year	Muskaan	Muskaan	Muskaan	Muskaan	AB	AB
80	Sheeba Salim	B.Ed 1st year	Sheeba	AB	Sheeba	Sheeba	Sheeba	Sheeba
81	Yashvee Rana	B.Ed 1st year	Yashvee	Yashvee	Yashvee	Yashvee	Yashvee	Yashvee
82	Amrita Singh	B.Ed 1st year	Amrita	Amrita	AB	Amrita	Amrita	Amrita
83	Aaiysha Khatoon	B.Ed 1st year	Aaisha	Aaisha	Aaisha	Aaisha	Aaisha	AB
84	Avishi	B.Ed 1st year	Avishi	AB	Avishi	Avishi	Avishi	Avishi
85	Pooja 17	B.Ed 1st year	Pooja	Pooja	Pooja	Pooja	Pooja	Pooja
86	Seema (S.Y.)	B.Ed 1st year	Seema	Seema	Seema	Seema	AB	Seema
87	Kajal	B.Ed 1st year	Kajal	Kajal	AB	Kajal	Kajal	Kajal
88	Geeta	B.Ed 1st year	Geeta	Geeta	Geeta	Geeta	Geeta	AB
89	Sangeeta	B.Ed 1st year	Sangeeta	Sangeeta	Sangeeta	AB	Sangeeta	Sangeeta
90	Pooja 100	B.Ed 1st year	Pooja	Pooja	Pooja	Pooja	AB	Pooja
91	Sapna	B.Ed 1st year	AB	Sapna	Sapna	Sapna	Sapna	Sapna
92	Kanchan	B.Ed 1st year	Kanchan	Kanchan	Kanchan	AB	Kanchan	Kanchan
93	Aashbil	B.Ed 1st year	Aashbil	Aashbil	AB	Aashbil	Aashbil	Aashbil
94	Varnika Aggarwal	B.Ed 1st year	Varnika	Varnika	Varnika	Varnika	Varnika	Varnika
95	Farha Naaz	B.Ed 1st year	Farha	Farha	Farha	Farha	Farha	Farha
96	Shakira	B.Ed 1st year	AB	Shakira	Shakira	Shakira	Shakira	Shakira
97	Poonam 43	B.Ed 1st year	Poonam Devi	Poonam Devi	Poonam Devi	Poonam Devi	Poonam Devi	Poonam Devi
98	Anjana	B.Ed 1st year	Anjana	Anjana	Anjana	Anjana	Anjana	Anjana
99	Shabana	B.Ed 1st year	Shabana	AB	Shabana	Shabana	Shabana	Shabana
100	Amreen	B.Ed 1st year	Amreen	Amreen	Amreen	AB	Amreen	Amreen



# ISMAIL NATIONAL MAHILA (P.G) COLLEGE

## B. Ed. Department CERTIFICATE COURSE

### ON LOGICAL REASONING, 2022-23

#### Attendance Sheet

S.No	Students' Name	class	16-2-2023	17-2-2023	21-2-2023	22-02-2023	23-2-2023	24-2-2023
1	Anisha	B Ed 1st year	Anisha	Anisha	Anisha	Anisha	Anisha	Anisha
2	Pooja	B.Ed 1st year	Pooja	Pooja	Pooja	Pooja	Pooja	Pooja
3	Himanshi	B.Ed 1st year	Himanshi	Himanshi	Himanshi	Himanshi	Himanshi	Himanshi
4	Asba	B.Ed 1st year	Asba	Asba	Asba	Asba	Asba	Asba
5	Ayesha	B.Ed 1st year	Ayesha	Ayesha	Ayesha	Ayesha	Ayesha	Ayesha
6	Pratibha Kapoor	B.Ed 1st year	Prati	Prati	Prati	Prati	Prati	Prati
7	Gulshan Kanishka	B.Ed 1st year	Gulshan	Gulshan	Gulshan	Gulshan	Gulshan	Gulshan
8	Chaurasia	B.Ed 1st year	Kanishka	Kanishka	Kanishka	Kanishka	Kanishka	Kanishka
9	Aliya Praveen	B.Ed 1st year	Aliya	Aliya	Aliya	Aliya	Aliya	Aliya
10	Tayyaba	B.Ed 1st year	Tayyaba	Tayyaba	Tayyaba	Tayyaba	Tayyaba	Tayyaba
11	Ayesha Parveen	B.Ed 1st year	Ayesha	Ayesha	Ayesha	Ayesha	Ayesha	Ayesha
12	Raveena	B.Ed 1st year	Raveena	Raveena	Raveena	Raveena	Raveena	Raveena
13	Rumsha Khan	B.Ed 1st year	Rumsha Khan	Rumsha Khan	Rumsha Khan	Rumsha Khan	Rumsha Khan	Rumsha Khan
14	Sheereen Ansari	B.Ed 1st year	Sheereen	Sheereen	Sheereen	Sheereen	Sheereen	Sheereen
15	GulafShah	B.Ed 1st year	Gulafsha	Gulafsha	Gulafsha	Gulafsha	Gulafsha	Gulafsha
16	Hijab Zehra	B.Ed 1st year	Zehra	Zehra	Zehra	Zehra	Zehra	Zehra
17	Zainab	B.Ed 1st year	Zainab	Zainab	Zainab	Zainab	Zainab	Zainab
18	Aasifa Mwati	B.Ed 1st year	Aasifa	Aasifa	Aasifa	Aasifa	Aasifa	Aasifa
19	Fatima Zehra	B.Ed 1st year	Fatima Zehra	Fatima Zehra	Fatima Zehra	Fatima Zehra	Fatima Zehra	Fatima Zehra
20	Anam Rana	B.Ed 1st year	Anam Rana	Anam Rana	Anam Rana	Anam Rana	Anam Rana	Anam Rana
21	Ramsha	B.Ed 1st year	Ramsha	Ramsha	Ramsha	Ramsha	Ramsha	Ramsha
22	Sadiya Salamat	B Ed 1st year	Sadiya	Sadiya	Sadiya	Sadiya	Sadiya	Sadiya
23	Sheetal	B Ed 1st year	Sheetal	Sheetal	Sheetal	Sheetal	Sheetal	Sheetal
24	Shariba	B.A2 Year	Shariba	Shariba	Shariba	Shariba	Shariba	Shariba
25	Km Deepa	B.Ed 1st year	Deepa	Deepa	Deepa	Deepa	Deepa	Deepa
26	Iqra	B.A 3 Year	Iqra	Iqra	Iqra	Iqra	Iqra	Iqra
27	Sania Zehra	B.Ed 1 year	Sania	Sania	Sania	Sania	Sania	Sania
28	Afsana	B Ed 2 year	Afsana	Afsana	Afsana	Afsana	Afsana	Afsana
29	Sayma Parveen	B Ed 2 year	Sayma	Sayma	Sayma	Sayma	Sayma	Sayma
30	Reshma Saifi	B.Ed 1st year	Saifi	Saifi	Saifi	Saifi	Saifi	Saifi
31	Summya	B.Ed 1st year	Summya	Summya	Summya	Summya	Summya	Summya
32	Sumaiya	B Ed 1st year	Sumaiya	Sumaiya	Sumaiya	Sumaiya	Sumaiya	Sumaiya
33	Neha Sharma	B.Ed 1st year	Neha	Neha	Neha	Neha	Neha	Neha



			16/2/23	17/2/23	21/2/23	22/2/23	23/2/23	24/2/23
67	Poomima Arora	B.Ed 1st year	Poomima	Poomima	Poomima	Poomima	AB	Poomima
68	Poonam 16	B.Ed 1st year	Poonam	Poonam	Poonam	Poonam	Poonam	Poonam
69	Shubhra Vidhya	B.Ed 1st year	Shubhra	Shubhra	Shubhra	Shubhra	Shubhra	Shubhra
70	Gulsaba	B.Ed 1st year	AB	Gulsaba	Gulsaba	Gulsaba	Gulsaba	AB
71	Mahjabeen	B.Ed 1st year	AB	Mehjabeen	Mehjabeen	Mehjabeen	Mehjabeen	AB
72	Divya	B.Ed 1st year	Divya	Divya	Divya	Divya	AB	Divya
73	Aqsa Khan	B.Ed 1st year	Apsakhan	Apsakhan	Apsakhan	Apsakhan	Apsakhan	Apsakhan
74	Babita	B.Ed 1st year	Babita	Babita	Babita	AB	Babita	Babita
75	Chanchal	B.Ed 1st year	Chanchal	Chanchal	Chanchal	Chanchal	Chanchal	Chanchal
76	Pooja 76	B.Ed 1st year	Pooja	AB	Pooja	Pooja	Pooja	Pooja
77	Komal	B.Ed 1st year	Komal	Komal	Komal	Komal	Komal	Komal
78	Mahak	B.Ed 1st year	<del>Mahak</del>	<del>Mahak</del>	AB	AB	<del>Mahak</del>	<del>Mahak</del>
79	Muskaan	B.Ed 1st year	<del>Muskaan</del>	<del>Muskaan</del>	<del>Muskaan</del>	<del>Muskaan</del>	<del>Muskaan</del>	<del>Muskaan</del>
80	Sheeba Salim	B.Ed 1st year	Sheeba	Sheeba	Sheeba	Sheeba	Sheeba	AB
81	Yashvee Rana	B.Ed 1st year	Yashvee	AB	Yashvee	Yashvee	Yashvee	Yashvee
82	Amrita Singh	B.Ed 1st year	<del>Amrita</del>	<del>Amrita</del>	<del>Amrita</del>	<del>Amrita</del>	AB	<del>Amrita</del>
83	Aaiysha Khatoon	B.Ed 1st year	AB	Aaisha	Aaisha	Aaisha	AB	Aaisha
84	Avishi	B.Ed 1st year	Avishi	Avishi	AB	Avishi	Avishi	Avishi
85	Pooja 17	B.Ed 1st year	Pooja	Pooja	Pooja	Pooja	Pooja	Pooja
86	Seema	B.Ed 1st year	Seema	AB	Seema	Seema	Seema	Seema
87	Kajal	B.Ed 1st year	<del>Kajal</del>	<del>Kajal</del>	<del>Kajal</del>	AB	<del>Kajal</del>	<del>Kajal</del>
88	Geeta	B.Ed 1st year	Geeta	AB	Geeta	Geeta	Geeta	Geeta
89	Sangeeta	B.Ed 1st year	Sangeeta	Sangeeta	AB	Sangeeta	Sangeeta	Sangeeta
90	Pooja 100	B.Ed 1st year	Pooja	Pooja	Pooja	Pooja	AB	Pooja
91	Sapna	B.Ed 1st year	AB	Sapna	Sapna	Sapna	Sapna	Sapna
92	Kanchan	B.Ed 1st year	Kanchan	Kanchan	AB	Kanchan	Kanchan	AB
93	Aashbil	B.Ed 1st year	<del>Aashbil</del>	<del>Aashbil</del>	<del>Aashbil</del>	<del>Aashbil</del>	<del>Aashbil</del>	<del>Aashbil</del>
94	Varnika Aggarwal	B.Ed 1st year	Varnika	AB	AB	Varnika	Varnika	Varnika
95	Farha Naaz	B.Ed 1st year	<del>Farha</del>	<del>Farha</del>	<del>Farha</del>	<del>Farha</del>	<del>Farha</del>	<del>Farha</del>
96	Shakira	B.Ed 1st year	AB	Shakira	Shakira	Shakira	Shakira	Shakira
97	Poonam 43	B.Ed 1st year	Poonam Devi	Poonam Devi	Poonam Devi	Poonam Devi	Poonam Devi	Poonam Devi
98	Anjana	B.Ed 1st year	Anjana	Anjana	Anjana	Anjana	Anjana	Anjana
99	Shabana	B.Ed 1st year	Shabana	AB	Shabana	Shabana	Shabana	Shabana
100	Amreen	B.Ed 1st year	Ankhan	Ankhan	Ankhan	AB	Ankhan	Ankhan

# ISMAIL NATIONAL MAHILA (P.G) COLLEGE

## B. Ed. Department CERTIFICATE COURSE

ON

### LOGICAL REASONING, 2022-23

#### Attendance Sheet

S.No	Students' Name	class	25-2-2023	27-2-2023	28-2-2023	01-03-2023	02-03-2023	03-03-2023
1	Anisha	B.Ed 1st year	Anisha	Anisha	Anisha	Anisha	Anisha	Anisha
2	Pooja	B.Ed 1st year	Pooja	Pooja	Pooja	Pooja	Pooja	Pooja
3	Himanshi	B.Ed 1st year	Himanshi	Himanshi	Himanshi	Himanshi	Himanshi	Himanshi
4	Asba	B.Ed 1st year	Asba	Asba	Asba	Asba	Asba	Asba
5	Ayesha	B.Ed 1st year	Ayesha	Ayesha	Ayesha	Ayesha	Ayesha	Ayesha
6	Pratibha Kapoor	B.Ed 1st year	Pratibha	Pratibha	Pratibha	Pratibha	Pratibha	Pratibha
7	Gulshan Kamishka	B.Ed 1st year	Gulshan	Gulshan	Gulshan	Gulshan	Gulshan	Gulshan
8	Chaurasia	B.Ed 1st year	Kamishka	Kamishka	Kamishka	Kamishka	Kamishka	Kamishka
9	Aliya Praveen	B.Ed 1st year	Aliya	Aliya	Aliya	Aliya	Aliya	Aliya
10	Tayyaba	B.Ed 1st year	Tayyaba	Tayyaba	Tayyaba	Tayyaba	Tayyaba	Tayyaba
11	Ayesha Parveen	B.Ed 1st year	Ayesha	Ayesha	Ayesha	Ayesha	Ayesha	Ayesha
12	Raveena	B.Ed 1st year	R	AB	AB	R	R	R
13	Rumsha Khan	B.Ed 1st year	Rumsha Khan	Rumsha Khan	Rumsha Khan	Rumsha Khan	Rumsha Khan	Rumsha Khan
14	Sheereen Ansari	B.Ed 1st year	Sheereen	Sheereen	Sheereen	Sheereen	Sheereen	Sheereen
15	GulafShah	B.Ed 1st year	Gulafsha	Gulafsha	Gulafsha	Gulafsha	Gulafsha	Gulafsha
16	Hijab Zehra	B.Ed 1st year	Zehra	Zehra	Zehra	Zehra	Zehra	Zehra
17	Zainab	B.Ed 1st year	Zainab	Zainab	Zainab	Zainab	Zainab	Zainab
18	Aasifa Mwati	B.Ed 1st year	Aasifa	Aasifa	Aasifa	Aasifa	Aasifa	Aasifa
19	Fatima Zehra	B.Ed 1st year	Fatima Zehra	Fatima Zehra	Fatima Zehra	Fatima Zehra	Fatima Zehra	Fatima Zehra
20	Anam Rana	B.Ed 1st year	Anam Rana	Anam Rana	Anam Rana	Anam Rana	Anam Rana	Anam Rana
21	Ramsha	B.Ed 1st year	Ramsha	Ramsha	Ramsha	Ramsha	Ramsha	Ramsha
22	Sadiya Salamat	B.Ed 1st year	Sadiya	Sadiya	Sadiya	Sadiya	Sadiya	Sadiya
23	Sheetal	B.Ed 1st year	Sheetal	Sheetal	Sheetal	Sheetal	Sheetal	Sheetal
24	Shariba	B.A2 Year	Shariba	Shariba	Shariba	Shariba	Shariba	Shariba
25	Km Deepa	B.Ed 1st year	Deepa	Deepa	Deepa	Deepa	Deepa	Deepa
26	Iqra	B.A 3 Year	Iqra	Iqra	Iqra	Iqra	Iqra	Iqra
27	Sania Zehra	B.Ed 1 year	Sania	Sania	Sania	Sania	Sania	Sania
28	Afsana	B.Ed 2 year	Afsana	Afsana	Afsana	Afsana	Afsana	Afsana
29	Sayma Parveen	B.Ed 2 year	Sayma	Sayma	Sayma	Sayma	Sayma	Sayma
30	Reshma Saifi	B.Ed 1st year	Raifi	Raifi	Raifi	Raifi	Raifi	Raifi
31	Summya	B.Ed 1st year	Summya	Summya	Summya	Summya	Summya	Summya
32	Sumaiya	B.Ed 1st year	Sumaiya	Sumaiya	Sumaiya	Sumaiya	Sumaiya	Sumaiya
33	Neha Sharma	B.Ed 1st year	Neha	Neha	Neha	Neha	Neha	Neha

25/2/23 27/2/23 28/2/23 1/3/23 2/3/23 3/3/23

34	Nisha	B.Ed 1st year	Nisha	Nisha	Nisha	Nisha	Nisha	Nisha
35	Shabnam	B.Ed 1st year	Shabnam	Shabnam	Shabnam	Shabnam	Shabnam	Shabnam
36	Rehnuma Ansari	B.Ed 2 year	Rehnuma Ansari	Rehnuma Ansari	Rehnuma Ansari	Rehnuma Ansari	Rehnuma Ansari	Rehnuma Ansari
37	Preeti Singh	B.Ed 1st year	Preeti Singh	Preeti Singh	Preeti Singh	Preeti Singh	Preeti Singh	Preeti Singh
38	Masha Praveen	B.Ed 1st year	Masha Praveen	Masha Praveen	Masha Praveen	Masha Praveen	Masha Praveen	Masha Praveen
39	Tuba	B.Ed 1st year	Tuba	Tuba	Tuba	Tuba	Tuba	Tuba
40	Arshi Saifi	B.Ed 1st year	Arshi Saifi	Arshi Saifi	Arshi Saifi	Arshi Saifi	Arshi Saifi	Arshi Saifi
41	Sheetal Rani	B.Ed 1st year	Sheetal Rani	Sheetal Rani	Sheetal Rani	AB	Sheetal Rani	
42	Kamal	B.Ed 1st year	Kamal	Kamal	Kamal	Kamal	Kamal	
43	Swati Singh	B.Ed 1st year	Swati Singh	Swati Singh	Swati Singh	Swati Singh	Swati Singh	
44	Riya Rastogi	B.Ed 1st year	Riya Rastogi	Riya Rastogi	Riya Rastogi	Riya Rastogi	Riya Rastogi	
45	Ayesha	B.Ed 2 year	Ayesha	Ayesha	Ayesha	Ayesha	Ayesha	
46	Nida	B.Ed 2 year	Nida	Nida	Nida	Nida	Nida	
47	Anshika Chaudhary	B.Ed 1st year	Anshika Chaudhary	Anshika Chaudhary	Anshika Chaudhary	Anshika Chaudhary	Anshika Chaudhary	
48	Shilpi	B.Ed 1st year	Shilpi	Shilpi	Shilpi	Shilpi	Shilpi	
49	Aayesha	B.Ed 1st year	Aayesha	Aayesha	Aayesha	AB	Aayesha	
50	Meenakshi	B.Ed 1st year	Meenakshi	Meenakshi	Meenakshi	Meenakshi	Meenakshi	
51	Monika Kaushik	B.Ed 1st year	Monika Kaushik	Monika Kaushik	Monika Kaushik	Monika Kaushik	Monika Kaushik	
52	Ruchi Gautam	B.Ed 1st year	Ruchi Gautam	Ruchi Gautam	Ruchi Gautam	Ruchi Gautam	Ruchi Gautam	
53	Tuba Khan	B.Ed 1st year	Tuba Khan	Tuba Khan	Tuba Khan	Tuba Khan	Tuba Khan	
54	Rajni	B.Ed 1st year	Rajni	Rajni	Rajni	Rajni	Rajni	
55	Rajia	B.Ed 1st year	Rajia	Rajia	Rajia	Rajia	Rajia	
56	Asra Javed	B.Ed 1st year	Asra Javed	Asra Javed	Asra Javed	Asra Javed	Asra Javed	
57	Aliya Hasan	B.Ed 1st year	Aliya Hasan	Aliya Hasan	Aliya Hasan	Aliya Hasan	Aliya Hasan	
58	Aiman Kafel	B.Ed 1st year	Aiman Kafel	Aiman Kafel	Aiman Kafel	Aiman Kafel	Aiman Kafel	
59	Seema	B.Ed 1st year	Seema	Seema	Seema	Seema	Seema	
60	Poonam	B.Ed 1st year	Poonam	Poonam	Poonam	Poonam	Poonam	
61	Kajal Khan	B.Ed 1st year	Kajal Khan	Kajal Khan	Kajal Khan	Kajal Khan	Kajal Khan	
62	Manisha	B.Ed 1st year	Manisha	Manisha	AB	Manisha	Manisha	
63	Vibhooti	B.Ed 1st year	Vibhooti	Vibhooti	Vibhooti	Vibhooti	Vibhooti	
64	Neha	B.A 3rd year	Neha	Neha	Neha	Neha	Neha	
65	Rahat	B.Ed 1st year	Rahat	Rahat	Rahat	AB	Rahat	
66	Himanshi	B.Ed 1st year	Himanshi	Himanshi	Himanshi	Himanshi	Himanshi	



# ISMAIL NATIONAL MAHILA (P.G) COLLEGE

## B. Ed. DEPARTMENT CERTIFICATE COURSE

ON

### LOGICAL REASONING, 2022-23

Attendance Sheet

S.No	Students' Name	class	4/3/2023	11/3/2023	13/3/2023	14/3/2023	15/3/2023	16/3/2023
1	Anisha	B.Ed 1st year	Anisha	Anisha	Anisha	Anisha	AB	AB
2	Pooja	B.Ed 1st year	Pooja	Pooja	Pooja	Pooja	Pooja	AB
3	Himanshi	B.Ed 1st year	Himanshi	AB	Himanshi	Himanshi	Himanshi	Himanshi
4	Asba	B.Ed 1st year	Asba	Asba	AB	Asba	Asba	Asba
5	Ayesha	B.Ed 1st year	Ayesha	AB	Ayesha	Ayesha	Ayesha	Ayesha
6	Pratibha Kapoor	B.Ed 1st year	AB	Pratibha	Pratibha	Pratibha	Pratibha	Pratibha
7	Gulshan	B.Ed 1st year	Gulshan	Gulshan	Gulshan	Gulshan	Gulshan	Gulshan
8	Kanishka Chaurasia	B.Ed 1st year	Kanishka	Kanishka	Kanishka	AB	Kanishka	Kanishka
9	Aliya Praveen	B.Ed 1st year	Aliya	Aliya	Aliya	Aliya	Aliya	AB
10	Tayyaba	B.Ed 1st year	Tayyaba	Tayyaba	AB	Tayyaba	Tayyaba	Tayyaba
11	Ayesha Parveen	B.Ed 1st year	Ayesha	AB	Ayesha	Ayesha	Ayesha	Ayesha
12	Raveena	B.Ed 1st year	Raveena	Raveena	Raveena	Raveena	Raveena	Raveena
13	Rumesha Khan	B.Ed 1st year	Rumesha Khan	Rumesha Khan	AB	Rumesha Khan	AB	Rumesha Khan
14	Sheereen Ansari	B.Ed 1st year	Sheereen	Sheereen	Sheereen	AB	Sheereen	Sheereen
15	GulafShah	B.Ed 1st year	Gulafsha	Gulafsha	Gulafsha	Gulafsha	Gulafsha	AB
16	Hijab Zehra	B.Ed 1st year	AB	Hijab	Hijab	Hijab	Hijab	Hijab
17	Zainab	B.Ed 1st year	Zainab	AB	Zainab	Zainab	Zainab	AB
18	Aasifa Mwati	B.Ed 1st year	Aasifa	Aasifa	Aasifa	Aasifa	AB	Aasifa
19	Fatima Zehra	B.Ed 1st year	Fatima Zehra	Fatima Zehra	Fatima Zehra	Fatima Zehra	AB	AB
20	Anam Rana	B.Ed 1st year	Anam Rana	Anam Rana	Anam Rana	Anam Rana	Anam Rana	AB
21	Ramsha	B.Ed 1st year	AB	Ramsha	Ramsha	AB	Ramsha	Ramsha
22	Sadiya Salamat	B.Ed 1st year	AB	Sadiya	Sadiya	AB	Sadiya	Sadiya
23	Sheetal	B.Ed 1st year	AB	Sheetal	Sheetal	Sheetal	Sheetal	Sheetal
24	Shariba	B.A2 Year	Shariba	Shariba	Shariba	Shariba	Shariba	Shariba
25	Km Deepa	B.Ed 1st year	Deepa	Deepa	Deepa	AB	Deepa	Deepa
26	Iqra	B.A 3 Year	Iqra	Iqra	Iqra	Iqra	Iqra	Iqra
27	Sania Zehra	B.Ed 1st year	Sania	Sania	AB	Sania	Sania	Sania
28	Afsana	B.Ed 2 year	Afsana	Afsana	Afsana	Afsana	Afsana	Afsana
29	Sayma Parveen	B.Ed 2 year	Sayma Parveen	Sayma Parveen	Sayma	Sayma	Sayma	Sayma
30	Reshma Saifi	B.Ed 1st year	AB	Reshma	Reshma	Reshma	Reshma	Reshma
31	Summya	B.Ed 1st year	Summya	Summya	Summya	Summya	Summya	AB
32	Sumaiya	B.Ed 1st year	AB	Sumaiya	Sumaiya	Sumaiya	AB	Sumaiya
33	Neha Sharma	B.Ed 1st year	Neha	Neha	Neha	Neha	Neha	Neha







# ISMAIL NATIONAL MAHILA (P.G) COLLEGE

## B. Ed. Department CERTIFICATE COURSE

ON

## LOGICAL REASONING, 2022-23

### Attendance Sheet

S.No	Students' Name	class	17-3-2023	18-3-2023	20-3-2023	21-03-2023	22-03-2023	23-03-2023
1	Anisha	B.Ed 1st year	Anisha	Anisha	Anisha	Anisha	Anisha	Anisha
2	Pooja	B.Ed 1st year	Pooja	Pooja	Pooja	Pooja	Pooja	Pooja
3	Himanshi	B.Ed 1st year	Himanshi	Himanshi	Himanshi	Himanshi	Himanshi	Himanshi
4	Asba	B.Ed 1st year	Asba	Asba	Asba	Asba	Asba	Asba
5	Ayesha	B.Ed 1st year	Ayesha	Ayesha	Ayesha	Ayesha	Ayesha	Ayesha
6	Pratibha Kapoor	B.Ed 1st year	Pratibha	Pratibha	Pratibha	Pratibha	Pratibha	Pratibha
7	Gulshan	B.Ed 1st year	Gulshan	Gulshan	Gulshan	Gulshan	Gulshan	Gulshan
8	Kanishka Chaurasia	B.Ed 1st year	Kanishka	Kanishka	Kanishka	Kanishka	Kanishka	Kanishka
9	Aliya Praveen	B.Ed 1st year	Aliya	Aliya	Aliya	Aliya	Aliya	Aliya
10	Tayyaba	B.Ed 1st year	Tayyaba	Tayyaba	Tayyaba	Tayyaba	Tayyaba	Tayyaba
11	Ayesha Parveen	B.Ed 1st year	Ayesha	Ayesha	Ayesha	Ayesha	Ayesha	Ayesha
12	Raveena	B.Ed 1st year	AB	♀	♀	♀	♀	♀
13	Rumsha Khan	B.Ed 1st year	Rumsha Khan	Rumsha Khan	Rumsha Khan	Rumsha Khan	Rumsha Khan	Rumsha Khan
14	Sheereen Ansari	B.Ed 1st year	Sheereen	Sheereen	Sheereen	Sheereen	Sheereen	Sheereen
15	GulafShah	B.Ed 1st year	Gulafsha	Gulafsha	Gulafsha	Gulafsha	Gulafsha	Gulafsha
16	Hijab Zehra	B.Ed 1st year	Hijab	Hijab	Hijab	Hijab	Hijab	Hijab
17	Zainab	B.Ed 1st year	Zainab	Zainab	Zainab	Zainab	Zainab	Zainab
18	Aasifa Mwati	B.Ed 1st year	Aasifa	Aasifa	Aasifa	Aasifa	Aasifa	Aasifa
19	Fatima Zehra	B.Ed 1st year	Fatima Zehra	Fatima Zehra	Fatima Zehra	Fatima Zehra	Fatima Zehra	Fatima Zehra
20	Anam Rana	B.Ed 1st year	Anam Rana	Anam Rana	Anam Rana	Anam Rana	Anam Rana	Anam Rana
21	Ramsha	B.Ed 1st year	Ramsha	Ramsha	Ramsha	Ramsha	Ramsha	Ramsha
22	Sadiya Salamat	B.Ed 1st year	Sadiya	Sadiya	Sadiya	Sadiya	Sadiya	Sadiya
23	Sheetal	B.Ed 1st year	Sheetal	Sheetal	Sheetal	Sheetal	Sheetal	Sheetal
24	Shariba	B.A2 Year	Shariba	Shariba	Shariba	Shariba	Shariba	Shariba
25	Km Deepa	B.Ed 1st year	Deepa	Deepa	Deepa	Deepa	Deepa	Deepa
26	Iqra	B.A 3 Year	Iqra	Iqra	Iqra	Iqra	Iqra	Iqra
27	Sania Zehra	B.Ed1 year	Sania	Sania	Sania	Sania	Sania	Sania
28	Afsana	B.Ed 2 year	Afsana	Afsana	Afsana	Afsana	Afsana	Afsana
29	Sayma Parveen	B.Ed 2 year	Sayma	Sayma	Sayma	Sayma	Sayma	Sayma
30	Reshma Saifi	B.Ed 1st year	Saifi	Saifi	Saifi	Saifi	Saifi	Saifi
31	Summya	B.Ed 1st year	Summya	Summya	Summya	Summya	Summya	Summya
32	Sumaiya	B.Ed 1st year	Sumaiya	Sumaiya	Sumaiya	Sumaiya	Sumaiya	Sumaiya
33	Neha Sharma	B.Ed 1st year	Neha	Neha	Neha	Neha	Neha	Neha

17/3/23 18/3/23 20/3/23 21/3/23 22/3/23 23/3/23

34	Nisha	B Ed 1st year	Nisha	Nisha	Nisha	Nisha	Nisha	Nisha
35	Shabnam	B Ed 1st year	Shabnam	Shabnam	Shabnam	Shabnam	Shabnam	Shabnam
36	Rehnuma Ansari	B Ed 2 year	Rehnuma Ansari	Rehnuma Ansari	Rehnuma Ansari	Rehnuma Ansari	Rehnuma Ansari	Rehnuma Ansari
37	Preeti Singh	B Ed 1st year	Preeti Singh	Preeti Singh	Preeti Singh	Preeti Singh	Preeti Singh	Preeti Singh
38	Masha Praveen	B Ed 1st year	Masha Praveen	Masha Praveen	Masha Praveen	Masha Praveen	Masha Praveen	Masha Praveen
39	Tuba	B Ed 1st year	Tuba	Tuba	Tuba	Tuba	Tuba	Tuba
40	Arshi Saifi	B Ed 1st year	Arshi Saifi	Arshi Saifi	Arshi Saifi	Arshi Saifi	Arshi Saifi	Arshi Saifi
41	Sheetal Rani	B Ed 1st year	Sheetal Rani	Sheetal Rani	Sheetal Rani	Sheetal Rani	Sheetal Rani	Sheetal Rani
42	Kamal	B Ed 1st year	Kamal	Kamal	Kamal	Kamal	Kamal	Kamal
43	Swati Singh	B Ed 1st year	Swati Singh	Swati Singh	Swati Singh	Swati Singh	Swati Singh	Swati Singh
44	Riya Rastogi	B Ed 1st year	Riya Rastogi	Riya Rastogi	Riya Rastogi	Riya Rastogi	Riya Rastogi	Riya Rastogi
45	Ayesha	B Ed 2 year	Ayesha	Ayesha	Ayesha	Ayesha	Ayesha	Ayesha
46	Nida	B Ed 2 year	Nida	Nida	Nida	Nida	Nida	Nida
47	Anshika Chaudhary	B Ed 1st year	Anshika Chaudhary	Anshika Chaudhary	Anshika Chaudhary	Anshika Chaudhary	Anshika Chaudhary	Anshika Chaudhary
48	Shilpi	B Ed 1st year	Shilpi	Shilpi	Shilpi	Shilpi	Shilpi	Shilpi
49	Aayesha	B Ed 1st year	Aayesha	Aayesha	Aayesha	Aayesha	Aayesha	Aayesha
50	Meenakshi	B Ed 1st year	Meenakshi	Meenakshi	Meenakshi	Meenakshi	Meenakshi	Meenakshi
51	Monika Kaushik	B Ed 1st year	Monika Kaushik	Monika Kaushik	Monika Kaushik	Monika Kaushik	Monika Kaushik	Monika Kaushik
52	Ruchi Gautam	B Ed 1st year	Ruchi Gautam	Ruchi Gautam	Ruchi Gautam	Ruchi Gautam	Ruchi Gautam	Ruchi Gautam
53	Tuba Khan	B Ed 1st year	Tuba Khan	Tuba Khan	Tuba Khan	Tuba Khan	Tuba Khan	Tuba Khan
54	Rajni	B Ed 1st year	Rajni	Rajni	Rajni	Rajni	Rajni	Rajni
55	Raja	B Ed 1st year	Raja	Raja	Raja	Raja	Raja	Raja
56	Asra Javed	B Ed 1st year	Asra Javed	Asra Javed	Asra Javed	Asra Javed	Asra Javed	Asra Javed
57	Aliya Hasan	B Ed 1st year	Aliya Hasan	Aliya Hasan	Aliya Hasan	Aliya Hasan	Aliya Hasan	Aliya Hasan
58	Aiman Kafeel	B Ed 1st year	Aiman Kafeel	Aiman Kafeel	Aiman Kafeel	Aiman Kafeel	Aiman Kafeel	Aiman Kafeel
59	Seema (M.O)	B Ed 1st year	Seema	Seema	Seema	Seema	Seema	Seema
60	Poonam 69	B Ed 1st year	Poonam	Poonam	Poonam	Poonam	Poonam	Poonam
61	Kajal Khan	B Ed 1st year	Kajal Khan	Kajal Khan	Kajal Khan	Kajal Khan	Kajal Khan	Kajal Khan
62	Manisha	B Ed 1st year	Manisha	Manisha	Manisha	AB	AB	Manisha
63	Vibhooti	B Ed 1st year	Vibhooti	Vibhooti	Vibhooti	Vibhooti	Vibhooti	Vibhooti
64	Neha	B.A 3 rd year	Neha	AB	Neha	Neha	Neha	Neha
65	Rahat	B Ed 1st year	Rahat	Rahat	AB	Rahat	Rahat	Rahat
66	Himanshi	B Ed 1st year	Himanshi	Himanshi	Himanshi	Himanshi	Himanshi	Himanshi



**ISMAIL NATIONAL MAHILA (P.G) COLLEGE**  
**B. Ed. Department**  
**CERTIFICATE COURSE**  
**ON**  
**LOGICAL REASONING, 2022-23**

**Attendance Sheet**

S.No	Students' Name	class	25-3-2023
1	Anisha	B.Ed 1st year	Anisha
2	Pooja	B.Ed 1st year	Pooja
3	Himanshi	B.Ed 1st year	Himanshi
4	Asba	B.Ed 1st year	Asba
5	Ayesha	B.Ed 1st year	Ayesha
6	Pratibha Kapoor	B.Ed 1st year	Pratibha
7	Gulshan	B.Ed 1st year	Gulshan
8	Kanishka Chaurasia	B.Ed 1st year	Kanishka
9	Aliya Praveen	B.Ed 1st year	Aliya
10	Tayyaba	B.Ed 1st year	Tayyaba
11	Ayesha Parveen	B.Ed 1st year	Ayesha
12	Raveena	B.Ed 1st year	Raveena
13	Rumsha Khan	B.Ed 1st year	Rumsha Khan
14	Sheereen Ansari	B.Ed 1st year	Sheereen
15	GulafShah	B.Ed 1st year	Gulafsha
16	Hijab Zehra	B.Ed 1st year	Hijab
17	Zainab	B.Ed 1st year	Zainab
18	Aasifa Mwati	B.Ed 1st year	Aasifa
19	Fatima Zehra	B.Ed 1st year	Fatima Zehra
20	Anam Rana	B.Ed 1st year	Anam Rana
21	Ramsha	B.Ed 1st year	Ramsha
22	Sadiya Salamat	B.Ed 1st year	Sadiya
23	Sheetal	B.Ed 1st year	Sheetal
24	Shariba	B.A2 Year	Shariba
25	Km Deepa	B.Ed 1st year	Deepa
26	Iqra	B.A 3 Year	Iqra
27	Sania Zehra	B.Ed1 year	Sania
28	Afsana	B.Ed 2 year	Afsana
29	Sayma Parveen	B.Ed 2 year	Sayma
30	Reshma Saifi	B.Ed 1st year	Reshma
31	Summya.	B.Ed 1st year	Summya
32	Sumaiya	B.Ed 1st year	Sumaiya
33	Neha Sharma	B.Ed 1st year	Neha

34	Nisha	B.Ed 1st year	Nisha
35	Shabnam	B.Ed 1st year	Shabnam
36	Rehnuma Ansari	B.Ed 2 year	Rehnuma Ansari
37	Preeti Singh	B.Ed 1st year	Preeti Singh
38	Masha Praveen	B.Ed 1st year	Masha Praveen
39	Tuba	B.Ed 1st year	Tuba
40	Arshi Saifi	B.Ed 1st year	Arshi Saifi
41	Sheetal Rani	B.Ed 1st year	Sheetal
42	Kamal	B.Ed 1st year	Komal
43	Swati Singh	B.Ed 1st year	Swati
44	Riya Rastogi	B.Ed 1st year	Riya
45	Ayesha	B.Ed 2 year	Ayesha
46	Nida	B.Ed 2 year	Nida
47	Anshika Chaudhary	B.Ed 1st year	Anshika Chaudhary
48	Shilpi	B.Ed 1st year	Shilpi
49	Aayesha	B.Ed 1st year	Aayesha
50	Meenakshi	B.Ed 1st year	Meenakshi
51	Monika Kaushik	B.Ed 1st year	Monika
52	Ruchi Gautam	B.Ed 1st year	Ruchigautam
53	Tuba Khan	B.Ed 1st year	Tuba
54	Rajni	B.Ed 1st year	Rajni
55	Rajia	B.Ed 1st year	Rajia
56	Asra Javed	B.Ed 1st year	Asra Javed
57	Aliya Hasan	B.Ed 1st year	Aliya
58	Aiman Kafeel	B.Ed 1st year	Aiman Kafeel
59	Seema	B.Ed 1st year	Seema
60	Poonam 6A	B.Ed 1st year	Poonam
61	Kajal Khan	B.Ed 1st year	Kajal Khan
62	Manisha	B.Ed 1st year	Manisha
63	Vibhooti	B.Ed 1st year	Vibhuti Sharma
64	Neha	B.A 3rd year	Neha
65	Rahat	B.Ed 1st year	Rahat
66	Himanshi	B.Ed 1st year	Himanshi

S.NO	Students' Name	Class	25-3-2023
67	Poornima Arora	B.Ed 1st year	Purnima
68	Poonam	B.Ed 1st year	POONAM
69	Shubhra Vidhya	B.Ed 1st year	Shubhra
70	Gulsaba	B.Ed 1st year	Gulsaba
71	Mahjabeen	B.Ed 1st year	Mahjabeen
72	Divya	B.Ed 1st year	Divya
73	Aqsa Khan	B.Ed 1st year	Aqsa Khan
74	Babita	B.Ed 1st year	Babita
75	Chanchal	B.Ed 1st year	Chanchal
76	Pooja	B.Ed 1st year	Pooja
77	Komal	B.Ed 1st year	Komal
78	Mahak	B.Ed 1st year	Mehak
79	Muskaan	B.Ed 1st year	Muskan
80	Sheeba Salim	B.Ed 1st year	Sheeba
81	Yashvee Rana	B.Ed 1st year	Yashvee
82	Amrita Singh	B.Ed 1st year	Amrita
83	Aaiysha Khatoon	B.Ed 1st year	Aisha Khatoon
84	Avishi	B.Ed 1st year	Avishi
85	Pooja	B.Ed 1st year	Pooja
86	Seema	B.Ed 1st year	Seema
87	Kajal	B.Ed 1st year	Kajal
88	Geeta	B.Ed 1st year	Geeta
89	Sangeeta	B.Ed 1st year	Sangeeta
90	Pooja	B.Ed 1st year	Pooja
91	Sapna	B.Ed 1st year	Sapna
92	Kanchan	B.Ed 1st year	Kanchan
93	Aashbil	B.Ed 1st year	Aashbil
94	Varnika Aggarwal	B.Ed 1st year	Varnika
95	Farha Naaz	B.Ed 1st year	Farha Naaz
96	Shakira	B.Ed 1st year	Shakira
97	Poonam	B.Ed 1st year	Poonam
98	Anjana	B.Ed 1st year	Anjana
99	Shabana	B.Ed 1st year	Shabana
100	Amreen	B.Ed 1st year	Amreen